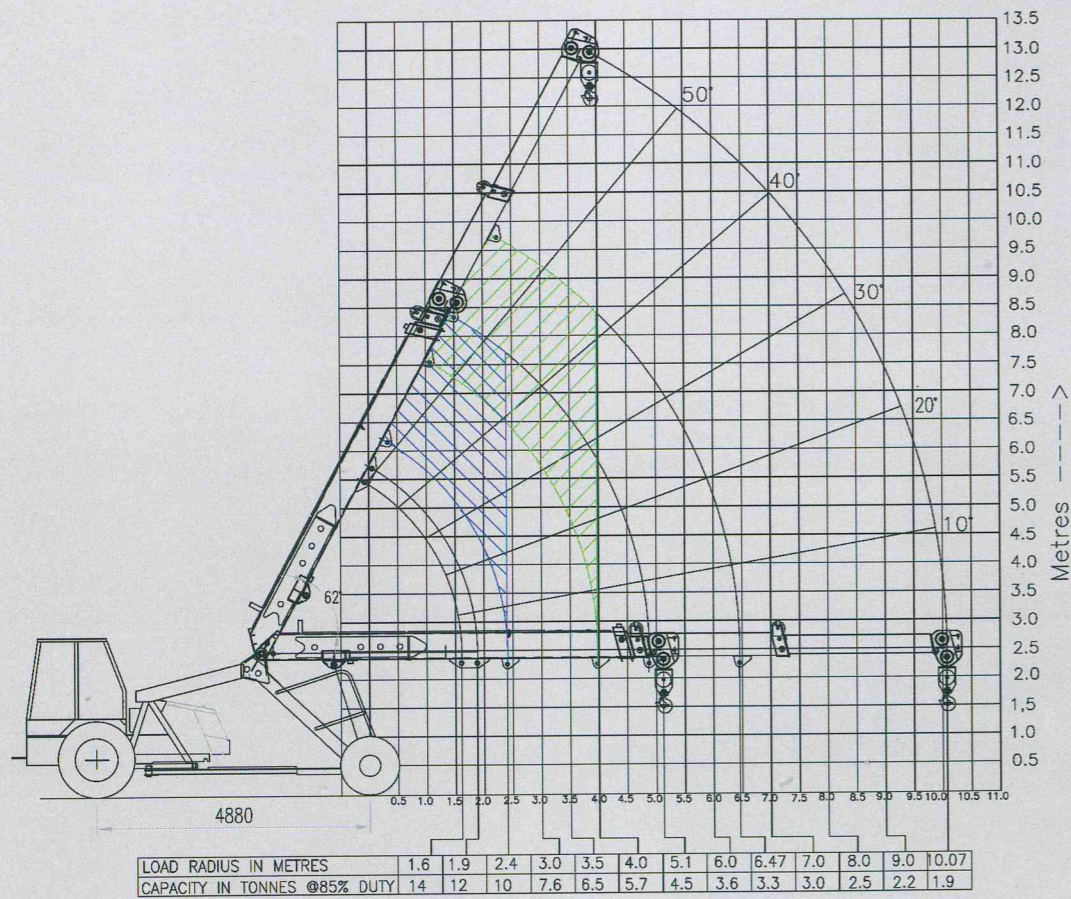


Load Chart- 14

(3 Part Slotted Boom)

LOAD CHART HYDRA-14
(3 PART SLOTTED BOOM)



ESCORTS
CONSTRUCTION EQUIPMENT

Plot No. 219, Sector 58, Ballabhgarh- 121 004, Haryana, India
Tel.: +91 129 2306570, Toll Free No.: 1800-180-4488, Fax: +91 129 2306463
e-mail: ece.marketing@escorts.co.in www.escorts.com

Dealer Stamp / Address

HYDRA 14

ESCORTS
CONSTRUCTION EQUIPMENT



14T 3 Part

Slotted Boom

Rope Compensation

Higher Winch Capacity

PROVEN BEST-IN-CLASS STABLE

HYDRA 14

Specifications



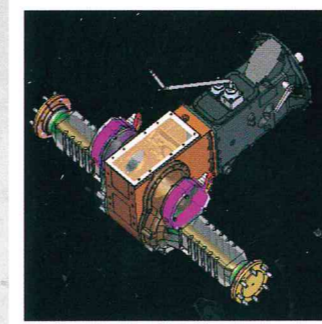
RATED CAPACITY	14T @ 1.6m radius 1.9T @ 10.07m radius
ENGINE	Make & Model Escorts AE 4.286A-3A Four Cylinder, water-cooled Diesel Engine, developing 50 HP @2200 RPM or equivalent.
TRANSMISSION	Drive 2 Wheel Drive Type Heavy duty transmission developed especially for crane application. Constant Mesh gearbox coupled with straight drive axle. Eight forward and Two reverse speeds with High / Low selector lever. Creep Speed 2 km/hr, ideal for crane operation (laden) Max. Speed 29 km/hr (unladen) Clutch Single plate, heavy duty type
STEERING	Type Articulated power steering, hydraulically controlled through 2 double acting jacks. Articulation Up to 56 degree Turning Radius 6.5m
BRAKES	Front Wheel Pneumatic assisted hydraulic brakes. Rear Wheel Disc brakes actuated through a slave cylinder. Parking Hand operated mechanically actuated at rear wheels.
TYRES	Front 11.00x20-16PR (4 Nos.), inflation pressure 110-115 PSI Rear 13.00x24-12PR (2 Nos.), inflation pressure 35 PSI Water Ballasted
TRACK	Front 1930 mm (center of twin wheels) Rear 1680 mm (center of wheels)
BOOM	Telescoping 3part hydraulically powered & fully synchronized. Type Slotted boom with rope compensation. Derricking Through double acting Jacks.

HOIST MECHANISM	Hoist Hydraulic Winch. Six falls (winch capacity 12T) Rope dia 13 mm
HYDRAULIC SYSTEM	Pump Vane type Hydraulic Pump Control Valve 4 spool control valve with built inpressure relief valve and precision control. Hydraulic Filter Suction line has a 100 mesh inline strainer while return line has 25 microns full flow filter.
ELECTRICAL SYSTEM	Type 12V Single Battery, Negative earth
CAPACITIES	Fuel Tank 45 Ltrs. Hydraulic Tank 65 Ltrs.
OPERATING WEIGHT (KG)	Gross Vehicle Weight 11100 Kg
OVERALL DIMENSIONS	Length 11900 mm Width 2550 mm Height 3100 mm
SAFETY SYSTEM	Rope compensation for auto leveling Overload audio warning system Hose protection failure device Safety Brakes on Hoist Cylinder guard for protection
STANDARD ACCESSORIES	All weather cabin Front bumper Reflectors Lift cylinder guard Rear view mirror Turn & reverse lamp
OPTIONAL ACCESSORIES	Fly Jib Fire Extinguisher Spark Arrestor Air Condition Cabin Steering Wheel Safe Load Indicator Over Hoist & Overload Cutoff



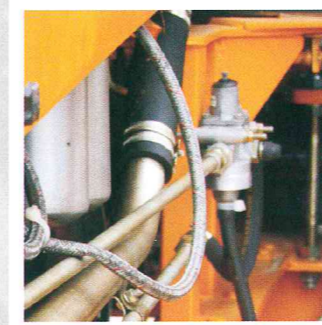
Engine

Escorts engine BS-III (CEV compliant) – high on power/ torque & low on fuel consumption & maintenance.



Transmission

Constant Mesh Transmission coupled with direct axle with 8F & 2R with better gear life and speed options. Can achieve top speed of 29 kmph and a creep speed of 2 kmph at rated rpm.



Rear Brakes

Disc Brakes in the rear for effective braking.



Lift Cylinder Mounting

Lift Cylinders are mounted with adequate gap for better strength, stability & precision handling of loads.



Hydraulic Winch

of 12T capacity with 6 fall snatch block for precision handling & low maintenance.



Cabin

Ergonomically designed spacious Cabin with modern dashboard for utmost operator comfort & operation.



Slotted Boom & Rope

compensation for precision handling & auto levelling of loads.