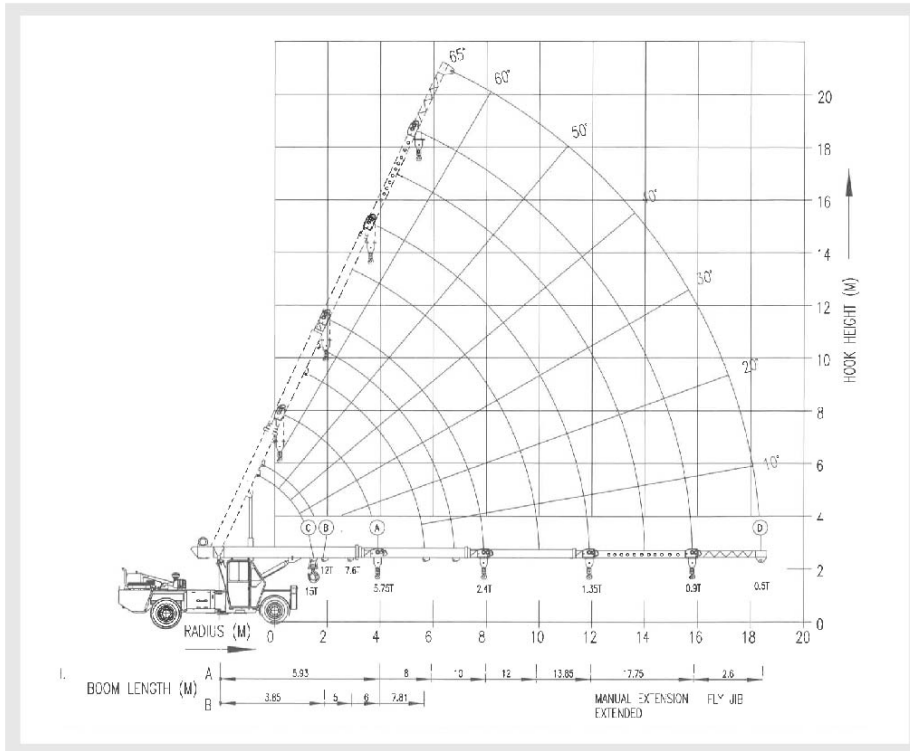


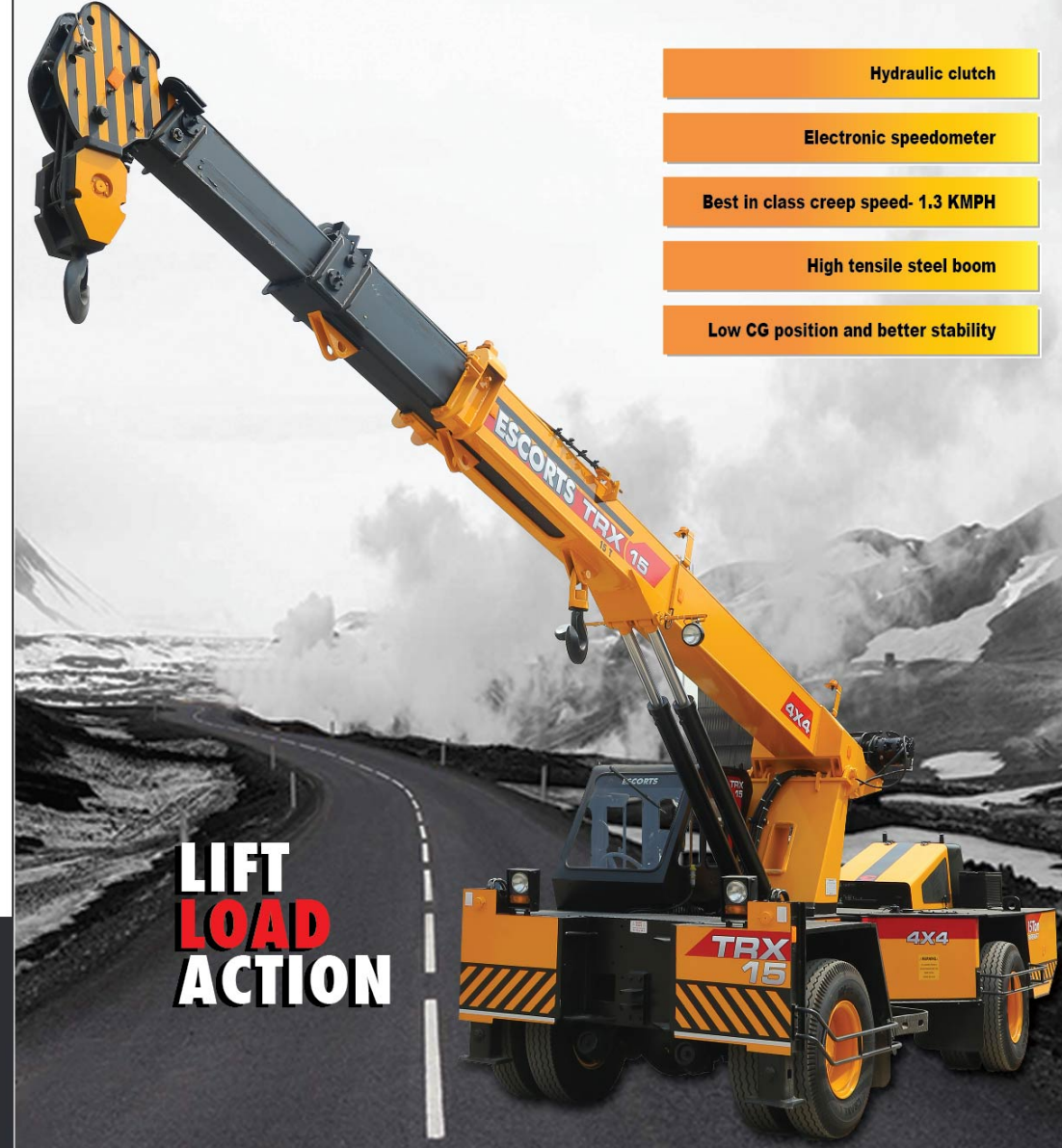
TRX-15 Load Chart



Rated loads are calculated for operation on levelled surface

The information contained in this bulletin is intended to be of general nature only. We reserve the right to change specifications without notice. All dimensions and weight are variable within +/- 5%.

TRX-15



- Hydraulic clutch
- Electronic speedometer
- Best in class creep speed- 1.3 KMPH
- High tensile steel boom
- Low CG position and better stability

LIFT LOAD ACTION



Escorts Construction Equipment: Plot No.- 219, Sector-58, Ballabhgarh-121 004, Dist.- Faridabad, Haryana (INDIA)
 Tel.- 0129- 2306574/2306598/2306571 Fax- 0129- 2306463
 Toll Free No.- 1800- 180- 4488 (Timings: 9.30 am - 5.00 pm, Monday to Friday)
 E-mail- ece.marketing@escorts.co.in Website- www.escortsece.com

Specification

Rated Capacity

15 Tonne at	1.50 m radius
900 kg at	15.80 m radius
Max Hook Height	17.60 m

Vehicle Performance

Speed	Max 44 KMPH
Gradeability	40% unladen
Creep Speed	1.3 KMPH

Drive

4 Wheel Drive

Engine

Diesel Engine of TATA MOTORS make, Model 497 TC, Turbo charged water cooled, developing 76Ps @ 2200 rpm.

Transmission

Synchromesh Transmission Gearbox of TATA MOTORS make with Auxiliary Gearbox: Speeds-10 forward and 2 reverse

Clutch

Single, dry type friction clutch plate

Brakes

Service: Fully air operated 'S' cam dual circuit brakes on front & rear axles

Parking: Air operated, spring actuated fail, safe brakes on rear axle

Axles

Front- Rigidly Mounted,

Rear- Mounted with two semi-elliptical springs,

Make- TATA

Tyres

Total 8 nos. - 11 x 20 - 16PR

Hydraulic System

Main pump of 46 cc/rev

Control Valve-6 spool double acting with a built in relief & auxiliary valve

Electrical System

12 V, DC, Negative Earth

120 AH Battery for Longer Life

Steering

Full power orbital with twin hydraulic double acting rams 40° articulation on either side

Boom

4 part boom, 3 part hydraulically powered & fully synchronized 4th part power extended and manually pinned for safety
Luff Angle: -10° to +65°

Hoist

Hydraulically Operated Winch with Max Line Speed 50m/min
Built in safety brakes

Wheel Base

3.95 m

Dimensions

Overall Length	10075 mm
Overall Width	2450 mm
Overall Height	3215 mm

Wheel Track

Front	1810 mm
Rear	1810 mm

Operating Weight

	2WD	4WD
Front Axle	6675 kg	6980 kg
Rear Axle	9260 kg	9730 kg
Total	15935 kg	16710 kg

Turning Radius

7.2 m

Standard Accessories

All weather cabin with unrestricted visibility

Optional Accessories

- 2.6 m Fly Jib
- Spare Wheel
- Air-conditioned Cabin
- Safe Load Indicator with Hydraulic Cutoff
- RHINO Hook
- Beacon Light
- Rear View Camera
- Fire Extinguisher
- Man Carrying Basket (275 kg)
- 4x2 Wheel Drive
- Outriggers
- Helper Seat with Platform
- Tyre Guard
- Equipment Monitoring System (Telematics)

- 15 T capacity crane with 21m vertical height with flying jib
- Travel long distance on own power
- Front mounted cabin with steering wheel
- Slotted boom

- Chassis type design, optimized geometry for enhanced stability and control
- Best-in-class creep speed
- Ergonomically designed cabin with easy access to levers

Features

Rear LCD



SLI Monitoring System



Actual Cabin



Heavy Duty Winch



Safe Load Indicator



Tyre Guard



Electronic Speedometer



Hydrolic Clutch



Rear view camera & integrated protected tail lights