

# ESCORTS F-17

## Specification

### • Rated Capacity

17 Tonne @ 1.5 m radius  
1 Tonne @ 15.80 m radius  
Max Hook Height 17.6 m with 4 part boom

### • Vehicle Performance

Speed: Max: 45 KMPH, Creep: 1.2 KMPH  
Gradeability: 40% unladen

### • Drive

4 Wheel Drive

### • Engine

Diesel Engine of VOLVO EICHER make,  
Model E483 TCIC, Turbo Charged  
water cooled  
Developing 101 HP @ 2400 rpm or  
Equivalent Engine  
Enhanced fuel efficiency by optimized  
power to wt ratio

### • Transmission

Synchromesh Gearbox with Auxillary Gearbox  
Speeds- 10 Forward and 2 Reverse

### • Clutch

Single, Dry type friction clutch plate

### • Brakes

Service: Fully air operated 'S' cam  
dual circuit brakes  
on front & rear axles  
Parking: Air operated, spring actuated  
fail safe brakes

### • Axles

Front: Front - Rigidly mounted  
Rear: Mounted with two semi elliptical springs

### • Tyres

8 nos.- 11 X 20-16PR

### • Hydraulic System

Main Pump of 46 cc/rev  
Control Valve - 6 spool double acting  
with a built in relief &  
auxillary valves

### • Electrical System

24V, DC

### • Steering

Full power orbitrol with twin hydraulic  
double acting rams 40° articulation  
on either side

### • Boom

4 part boom, 3 part hydraulically powered  
& fully synchronised  
4th part power extended and manually  
pinned for safety

### • Hoist

Hydraulically operated with 6 Falls Heavy Duty  
Winch built in safety brakes

### • Structure and Stability

Robust high strength light wt C-box chassis  
Lower CG position & better stability

### • Wheel Base

3.95 m

### • Dimensions

Overall length : 10075 mm  
Overall width : 2450 mm  
Overall height : 3215 mm

### • Wheel Track

Front : 1825 mm  
Rear : 1825 mm

### • Operational Weight

Front Axle : 6800 Kg  
Rear Axle : 10000 Kg  
Total : 16800 Kg

### • Turning Radius

7.3 m

### • Optional Accessories

2.6 m Fly Jib	Spare Wheel
AC cabin	Outriggers
Rhino Hook	Beacon Light
Fire Extinguisher	Drag Winch
Tyre Guard	SLI with Hydraulic Cut off
Helper Seat with Platform	
Rear View Camera (Display)	
Man Carrying Basket (275 kg)	
Equipment Monitoring System (EMS)	

# ESCORTS F-17

## Features



Rear LCD



Spacious Cabin



SLI Monitoring System



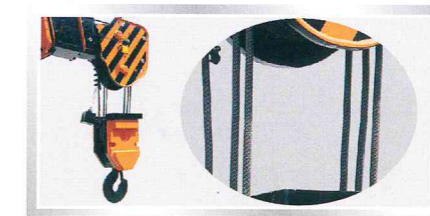
Control of Lever for Ease of Operations



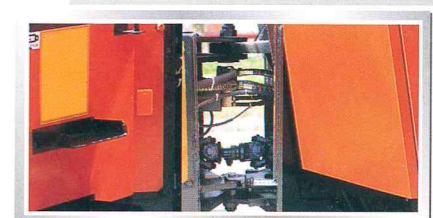
Speakers



Heavy Duty Winch



Heavy Duty Snatch Block with 6 Falls



Heavy Duty Articulation Joint



Rear View Camera & Integrated Protected Tail Lights



Safe Load Indicator



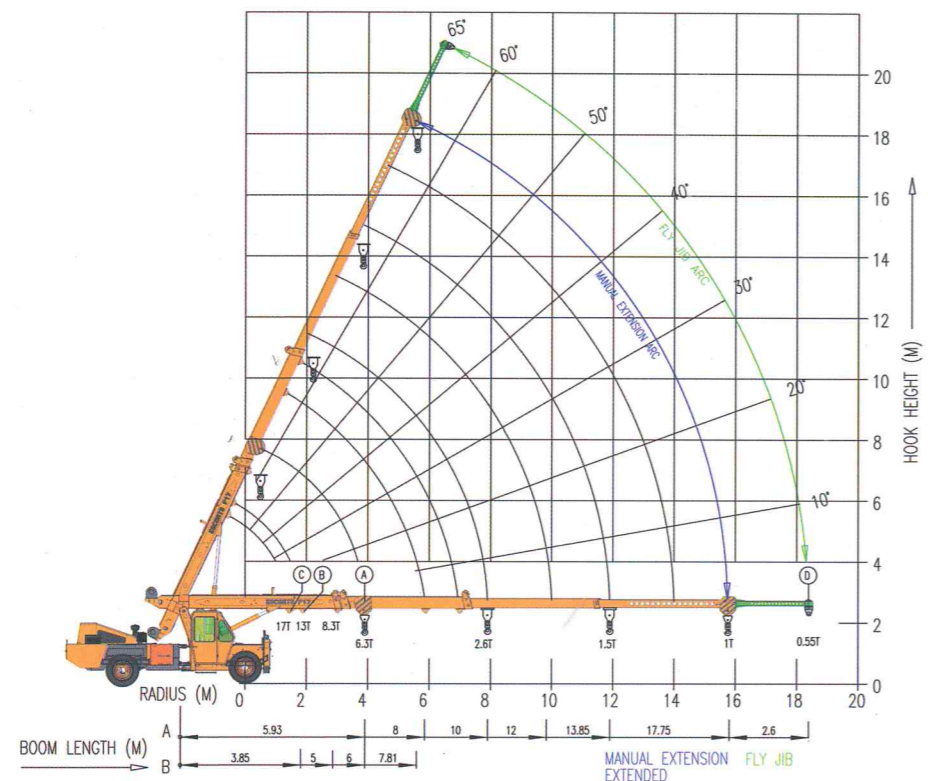
Tyre Guard

- 17 T capacity crane with 21m vertical height with fly jib
- Travel long distance on own power
- Front mounted cabin with steering wheel
- Chassis type design, optimised geometry for enhanced stability and control

- Slotted Boom
- Best-in-class Creep Speed
- Heavy Duty Winch with 6 fall snatch block with rope compensation for precision positioning
- Ergonomically designed cabin with easy access to levers

# ESCORTS F-17

## Load Chart



RADIUS (M)	A						B				C		D FLY JIB (BOOM FULLY EXTENDED)
	BOOM LENGTH IN METRES - MANUAL EXTENSION RETRACTED						BOOM PIVOT TO INNER LUG 1ST JIB EXTN. MANUAL EXTN. RETRACTED				17T LUG		
	5.93	8	10	12	13.85	17.75	3.85	5	6	7.81	BOOM FULLY RETRACTED		
2	8250	8250	8250				13200	12100	12100	11600	RADIUS (M)	S.W.L (KG)	
3	8250	8250	7590	5720							1.5	17000	
4	6325	6270	5577	4950	4365			7700	7700	7370			
5		4850	5200	4400	3800	1850							
6		3950	3850	3800	3400	1700			5280	5225			
7			3150	3150	3000	1600							
8			2650	2725	2640	1540							
9				2340	2280	1450							
10					1950	1375							
11					1705	1290							
12					1485	1245							
13						1220							
16						990							
18													

\* RADIUS IS THE HORIZONTAL DISTANCE MEASURED FROM THE CENTRE OF FRONT WHEEL TO THE LOAD POINT  
 \* S.W.L ARE BASED ON 85% STABILITY & STRENGTH  
 \* S.W.L ARE BASED ON FIRM LEVEL GROUND WITH TYRES 11 X 20 X 16 PLY INFLATED TO 115 PSI, WEIGHT OF HOOKS, BLOCKS, SLINGS & CHAIN ETC. INCLUDED  
 \* LIFT & CARRY - THE S.W.L SHALL BE CARRIED WITH THE MINIMUM BOOM LENGTH & AS CLOSE TO THE GROUND AS POSSIBLE AT SPEEDS NOT IN EXCESS OF 2 KMPH  
 \* BOOM HEAD MOUNTED RHINO HOOK CAPACITY-6000 Kg



**ESCORTS**  
**CONSTRUCTION EQUIPMENT**

Escorts Construction Equipment: Plot No. 219, Sector- 58, Ballabhgarh- 121 004, Haryana (INDIA)

Tel.: 0129-2306574/2306598/2306571 Fax: 0129-2306572

Toll Free No.-1800- 180- 4488 (Timings: 9.30 am - 5.00 pm, Monday to Friday)

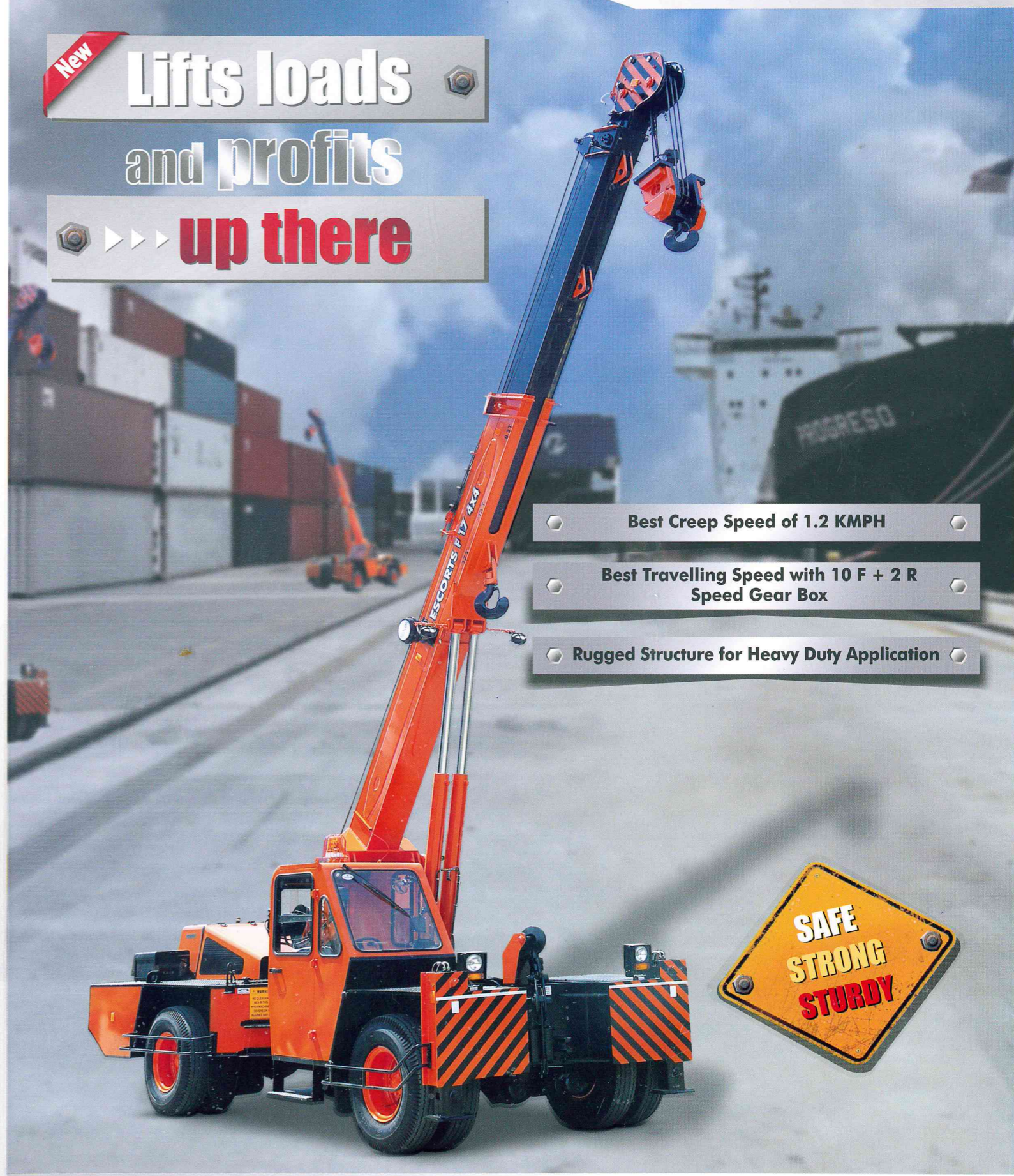
E-mail: ece.marketing@escorts.co.in Website: www.escortsece.com

www.hubkreatives.com

# ESCORTS F-17



**New**  
**Lifts loads**  
**and profits**  
**up there**



- Best Creep Speed of 1.2 KMPH
- Best Travelling Speed with 10 F + 2 R Speed Gear Box
- Rugged Structure for Heavy Duty Application



Accessories as shown in the picture may not be the part of standard fitment and are subject to change without prior notice.