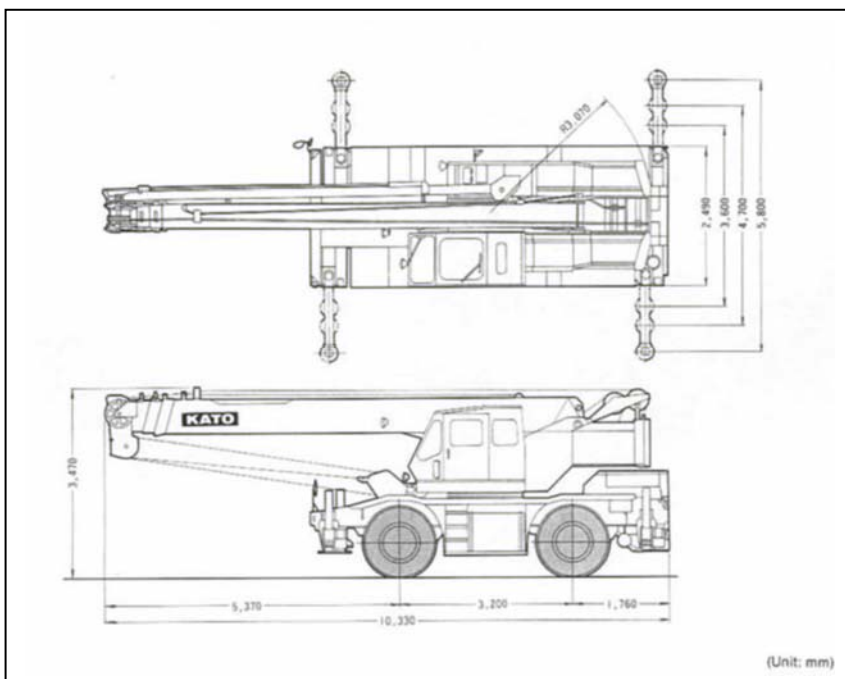


KATO KR25H – 25ton Mobile Crane

The KR25H is a rough terrain 25ton mobile crane. The crane is delivered to location either by road transportable trailer for long distances or driven directly to site for short distances.

The KR25H is an ideal crane to have onboard our vessels.



Malmö
Oljevägen 14
211 24 Malmö
040 – 93 30 00

Sölvesborg
Hamngatan 1
294 31 Sölvesborg
0456 – 141 66

Ängelholm
Box 1129
262 22 Ängelholm
0431 – 256 20

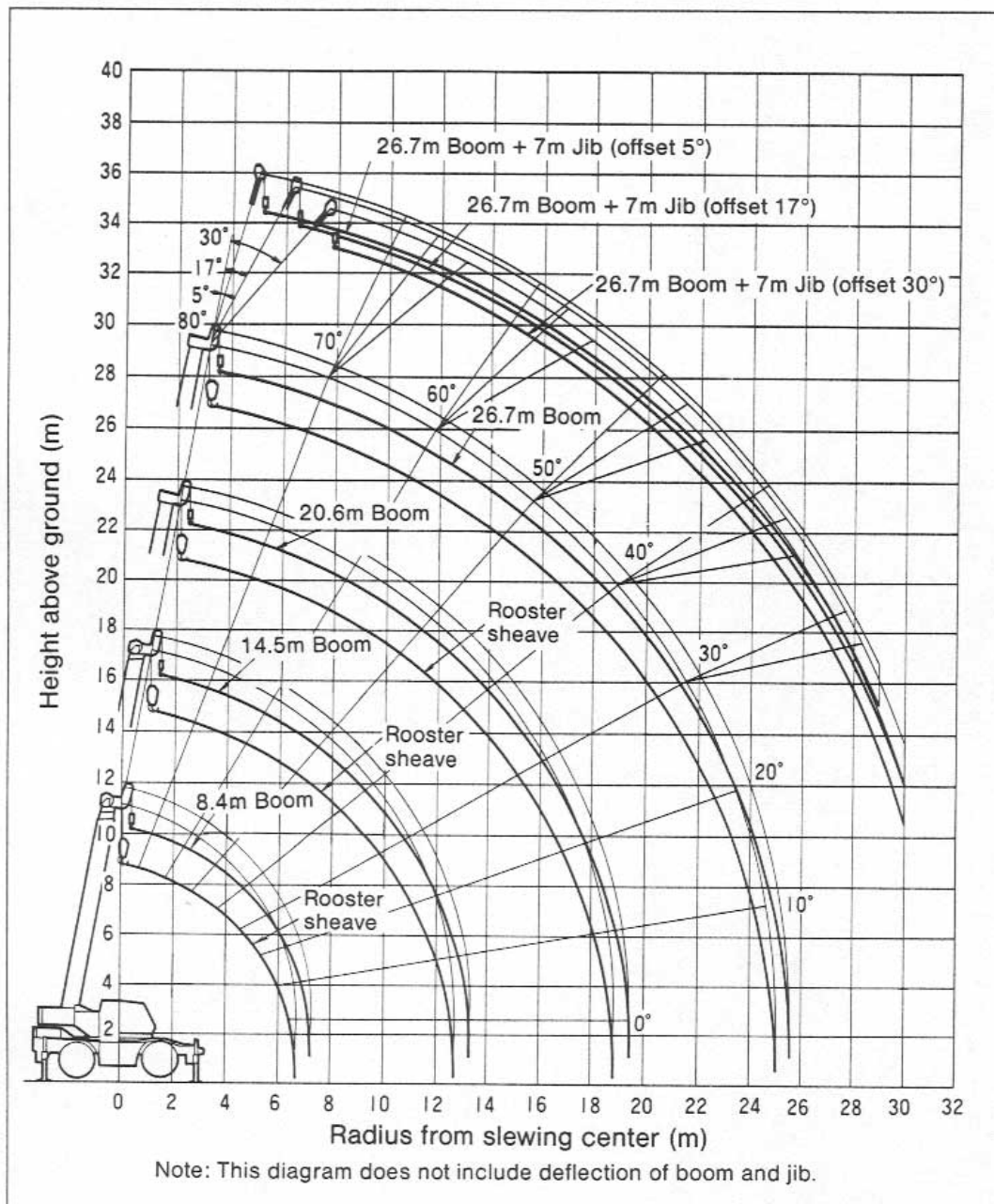
Stockholm
Bergsgatan 53
112 53 Stockholm
08 – 650 71 14

Org.nummer
556223-2172
Internet
www.sse-ab.se

Technical Specifications

Mfg. Year	1992
Crane Type	Rough Terrain
Max Lifting Capacity	25 t.
Boom Type	Telescopic
Max Boom Length+Jib	31.2 (44.8) m
Engine Rated Output	220 ahp

WORKING RANGE



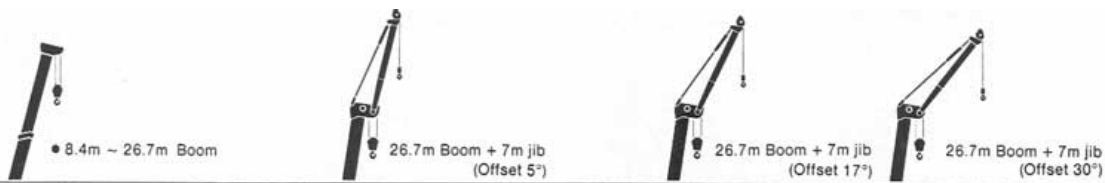
Malmö
Oljevägen 14
211 24 Malmö
040 - 93 30 00

Sölvesborg
Hamngatan 1
294 31 Sölvesborg
0456 - 141 66

Ängelholm
Box 1129
262 22 Ängelholm
0431 - 256 20

Stockholm
Bergsgatan 53
112 53 Stockholm
08 - 650 71 14

Org.nummer
556223-2172
Internet
www.sse-ab.se



RATED LIFTING CAPACITY

(Based on:
• BS 1757:1981
• DIN 15019-2
• 75% of tipping loads)

Working radius (m)	With fully extended outriggers				With intermittently extended outriggers (4.7m)			
	360° full range				over side			
	8.4 m Boom	14.5 m Boom	20.6 m Boom	26.7 m Boom	8.4 m Boom	14.5 m Boom	20.6 m Boom	26.7 m Boom
2.5	25.00	16.00			25.00	16.00		
3.0	25.00	16.00			25.00	16.00		
3.5	20.00	16.00	9.00		20.00	16.00	9.00	
4.0	18.50	15.50	9.00		18.50	15.50	9.00	
4.5	16.50	14.20	9.00	6.80	16.50	14.20	9.00	6.80
5.0	15.00	13.10	9.00	6.80	15.00	13.10	9.00	6.80
5.5	13.70	12.10	9.00	6.80	12.30	12.10	9.00	6.80
6.0	12.50	11.20	9.00	6.80	10.40	10.00	9.00	6.80
6.5	11.50	10.40	8.50	6.80	8.70	8.50	8.50	6.80
7.0		9.70	8.00	6.80		7.40	8.00	6.80
8.0		8.15	7.10	6.10		5.70	6.25	5.90
9.0		6.45	6.40	5.50		4.55	5.05	5.30
10.0		5.25	5.80	5.00		3.70	4.15	4.40
12.0		3.65	4.15	4.20		2.45	2.95	3.20
14.0			3.05	3.30			2.10	2.35
16.0			2.30	2.55			1.50	1.70
18.0			1.75	1.95			1.05	1.25
20.0				1.50				0.90
22.0				1.20				0.65
24.0				0.90				0.45
25.0				0.80				
Critical boom angle	-	-	-	-	-	-	-	-

(Unit: Metric ton)

RATED LIFTING CAPACITY

Working radius (m)	With intermittently extended outriggers (3.6 m)				With retracted outriggers (blocked on vertical cyls.)			
	over side				over side			
	8.4 m Boom	14.5 m Boom	20.6 m Boom	26.7 m Boom	8.4 m Boom	14.5 m Boom	20.6 m Boom	26.7 m Boom
2.5	25.00	16.00			10.50	9.50		
3.0	20.00	16.00			10.50	9.50	6.50	
3.5	18.80	16.00	9.00		8.20	7.60	6.50	
4.0	14.50	13.60	9.00		6.50	6.10	6.50	4.00
4.5	11.50	11.10	9.00	6.80	5.35	4.90	5.50	4.00
5.0	9.50	9.10	9.00	6.80	4.45	4.10	4.60	4.00
5.5	8.00	7.65	8.10	6.80	3.75	3.40	3.90	4.00
6.0	6.90	6.50	7.00	6.80	3.20	2.85	3.30	3.50
6.5	6.00	5.60	6.15	6.30	2.70	2.40	2.85	3.05
7.0		4.85	5.40	5.60		2.05	2.50	2.65
8.0		3.75	4.25	4.50		1.40	1.85	2.10
9.0		2.90	3.40	3.60		0.90	1.40	1.65
10.0		2.25	2.75	3.00		0.55	1.05	1.30
11.0		1.75	2.25	2.45			0.75	1.00
12.0		1.35	1.80	2.05				0.75
13.0			1.50	1.70				
14.0			1.20	1.40				
15.0			0.95	1.15				
16.0			0.75	0.95				
17.0			0.55	0.75				
18.0				0.60				
19.0				0.45				
Critical boom angle	-	-	-	35°	-	33°	50°	58°

(Unit: Metric ton)

JIB RATED LIFTING CAPACITY

■ 26.7m Boom + 7m Jib

Boom angle (°)	With fully extended outriggers					
	360° full range					
	offset 5°		offset 17°		offset 30°	
Working radius (m)	Load	Working radius (m)	Load	Working radius (m)	Load	
80.0	6.2	3.00	7.5	2.40	8.8	2.00
75.0	9.4	3.00	10.5	2.40	11.7	2.00
73.0	10.6	3.00	11.5	2.40	12.8	2.00
70.5	12.0	3.00	13.0	2.40	14.0	2.00
65.0	14.9	2.40	15.8	2.00	16.8	1.75
60.0	17.4	2.00	18.2	1.75	19.2	1.60
55.0	19.8	1.75	20.5	1.55	21.3	1.50
53.0	20.7	1.55	21.4	1.50	22.1	1.35
50.0	21.9	1.35	22.7	1.30	23.2	1.20
45.0	23.8	1.05	24.5	1.05	25.0	0.95
40.0	25.6	0.80	26.2	0.80	26.6	0.75
35.0	27.2	0.65	27.7	0.62	27.9	0.60
30.0	28.6	0.50	29.0	0.50	29.0	0.45
25.0	29.8	0.41	30.0	0.40		
23.6	30.0	0.40				
Critical boom angle	-	-	-	-	-	-

(Unit: Metric ton)

JIB RATED LIFTING CAPACITY

■ 26.7m Boom + 7m Jib

Boom angle (°)	With intermittently extended outriggers (4.7m)					
	over side					
	offset 5°		offset 17°		offset 30°	
Working radius (m)	Load	Working radius (m)	Load	Working radius (m)	Load	
80.0	6.2	3.00	7.5	2.40	8.8	2.00
75.0	9.4	3.00	10.0	2.40	11.7	2.00
70.5	12.0	3.00	13.0	2.40	14.0	2.00
66.5	14.1	2.55	15.0	2.10	16.1	1.95
63.5	15.5	2.10	16.5	1.90	17.6	1.70
60.0	17.2	1.65	18.2	1.55	19.2	1.40
55.0	19.6	1.15	20.5	1.10	21.2	1.05
50.0	21.7	0.85	22.6	0.80	23.1	0.75
45.0	23.6	0.60	24.5	0.55	24.9	0.55
40.0	25.4	0.40	25.9	0.40	26.4	0.40
Critical boom angle	30°		30°		30°	

(Unit: Metric ton)

Malmö
Oljevägen 14
211 24 Malmö
040 - 93 30 00

Sölvesborg
Hamngatan 1
294 31 Sölvesborg
0456 - 141 66

Angelholm
Box 1129
262 22 Ängelholm
0431 - 256 20

Stockholm
Bergsgatan 53
112 53 Stockholm
08 - 650 71 14

Org.nummer
556223-2172
Internet
www.sse-ab.se