

Rated Lifting Capacity (Hammer Head Boom)

Unit: ton

A	Boom Length (m)											
	12.19	15.24	18.29	21.34	24.38	27.43	30.48	33.53	36.58	39.62	42.67	45.72
4.8	200.0											
5.0	200.0	175.0	165.0/5.5									
6.0	160.0	160.0	160.0	115.0/6.5								
7.0	131.0	131.0	131.0	114.0	107.0	102.0/7.5						
8.0	104.0	104.0	104.0	104.0	102.0	100.0	92.0	85.0/8.5				
9.0	85.5	87.0	87.5	88.0	88.5	89.0	89.0	84.0	75.0	69.0/9.5		
10.0	73.5	74.0	74.5	75.0	75.0	75.5	76.0	75.5	72.5	68.0	62.0/10.5	57.0/11
12.0	64.0/11	57.5	58.0	58.0	58.5	58.5	59.0	59.0	59.0	58.5	58.5	55.5
14.0		46.0	46.3	46.5	46.8	47.2	47.5	47.6	47.6	47.5	47.5	47.4
16.0			38.6	38.8	39.0	39.3	39.5	39.6	39.7	39.7	39.7	39.6
18.0				33.3	33.4	33.6	33.7	33.7	33.6	33.6	33.5	33.4
20.0				30.8/19	29.1	29.1	29.1	29.1	29.1	29.0	29.0	28.9
22.0					25.5	25.6	25.6	25.5	25.5	25.4	25.4	25.3
24.0						22.6	22.6	22.5	22.5	22.4	22.4	22.3
26.0							20.3	20.2	20.2	20.1	20.1	20.0
28.0							19.0/27	18.3	18.2	18.1	18.1	18.0
30.0								17.1/29	16.4	16.3	16.3	16.2
32.0									15.0	14.9	14.8	14.7
34.0										13.6	13.5	13.4
36.0										12.9/35	12.5	12.3
38.0											11.8/37	11.3
40.0												10.4
B	18	15	14	10	9	8	8	7	6	6	5	5

A = Working Radius (m)

B = No. of Part-lines

- The rated loads shown do not exceed 78% of the tipping load with the machine operating on firm level ground, and are not less than 1.15 times over-front stability stipulated by mobile crane construction standards.
- Please use outrigger during lifting operation.
- Lifting capacities marked with * is determined with the strength on the boom. Please do not overload the lifting capacities.
- Please use the following for Crane Hoist Wire Rope.
 - Mono Rope EP 3 X F (a + 40) C Type ø28, breaking load 69.3ton
 - Tough Super T 7 X 7+ 6 X F (29) C Type ø28, breaking load 67.9 ton

Rated Lifting Capacity (Taper Top Boom)

A	Boom Length (m)																												
	18.29	21.34	24.38	27.43	30.48	33.53	36.58	39.62	42.67	45.72	48.77	51.82	54.86	57.91	60.96	64.01	67.06	70.10	73.15	76.20	79.25	82.30	85.34	88.39	91.44				
4.8	100.0																												
5.0	100.0	100.0/5.5																											
6.0	100.0	100.0	100.0	100.0/6.5																									
7.0	100.0	100.0	100.0	100.0	97.0	87.0/7.5																							
8.0	100.0	100.0	100.0	100.0	93.5	85.3	78.8	71.5/8.5																					
9.0	88.4	88.8	89.2	89.5	89.5	82.5	75.6	70.5	66.5	59.5/9.5																			
10.0	75.6	76.0	76.4	76.9	76.9	76.5	73.0	68.0	65.2	58.6	55.0	50.2/11	46.5/11.5																
12.0	58.2	58.5	58.8	59.0	59.1	59.1	59.1	59.0	59.0	56.2	53.2	49.0	46.0	42.7	38.0/12.5	35.9/13	33.1/13.5												
14.0	47.3	47.5	47.8	48.0	48.1	48.2	48.3	48.3	48.3	48.0	47.5	46.8	43.5	40.5	37.2	35.0	32.7	30.1/14.5	27.6/15	24.7/15.5									
16.0	39.6	39.8	40.0	40.2	40.3	40.4	40.4	40.4	40.3	40.2	40.1	40.0	39.4	39.0	35.6	33.3	31.0	29.0	27.0	24.5	22.5/16.5	20.5/17							
18.0		34.3	34.4	34.5	34.6	34.6	34.6	34.5	34.5	34.4	34.3	34.1	34.0	33.7	32.8	32.0	29.4	27.8	25.5	23.5	22.1	20.1	18.5	16.6/19					
20.0			30.1	30.2	30.2	30.2	30.1	30.1	30.1	30.0	29.9	29.7	29.6	29.4	29.2	28.6	28.0	25.5	24.3	22.5	20.7	19.3	17.5	16.0	13.5				
22.0			26.6	26.7	26.7	26.6	26.6	26.5	26.5	26.4	26.3	26.2	26.0	25.8	25.6	25.3	24.9	23.2	22.3	20.8	19.1	17.7	16.1	14.6	12.7				
24.0				23.7	23.7	23.6	23.6	23.5	23.5	23.4	23.3	23.2	23.1	23.0	22.9	22.5	22.1	21.1	20.4	19.2	17.6	16.4	14.8	13.5	12.7				
26.0				22.1/25	21.4	21.3	21.3	21.2	21.2	21.1	21.0	20.9	20.8	20.7	20.5	20.2	19.8	19.2	18.6	17.6	16.3	15.2	13.7	12.4	11.5				
28.0					20.1/27	19.4	19.3	19.2	19.2	19.1	19.0	18.8	18.7	18.6	18.5	18.2	17.8	17.3	16.9	16.2	15.0	14.1	12.7	11.5	10.5				
30.0						17.6	17.5	17.4	17.4	17.3	17.2	17.1	17.0	16.9	16.8	16.5	16.2	15.7	15.3	14.8	13.9	13.2	11.8	10.6	9.7				
32.0							16.1	16.0	15.9	15.8	15.7	15.6	15.5	15.4	15.3	15.0	14.7	14.2	13.8	13.5	12.8	12.0	10.9	9.7	9.0				
34.0								15.2/33	14.7	14.6	14.5	14.4	14.3	14.2	14.1	13.9	13.7	13.4	12.9	12.6	12.3	11.7	10.9	10.0	9.0	8.3			
36.0									13.8/35	13.5	13.4	13.3	13.2	13.1	13.0	12.8	12.6	12.3	11.8	11.5	11.2	10.7	10.0	9.3	8.3	7.6			
38.0										12.5	12.4	12.3	12.2	12.1	11.9	11.7	11.5	11.3	10.8	10.5	10.2	9.7	9.2	8.6	7.7	7.0			
40.0											11.5	11.4	11.3	11.2	11.0	10.8	10.6	10.3	9.9	9.6	9.3	8.9	8.4	7.9	7.2	6.5			
42.0												11.1/41	10.6	10.5	10.4	10.2	10.0	9.8	9.5	9.0	8.7	8.5	8.2	7.7	7.3	6.0			
44.0													10.2/43	9.7	9.6	9.4	9.2	8.9	8.6	8.3	7.9	7.8	7.5	7.0	6.7	5.5			
46.0														9.1	8.9	8.7	8.5	8.3	8.0	7.6	7.3	7.2	6.8	6.4	6.1	5.7	5.1		
48.0															8.3	8.1	7.9	7.6	7.2	6.9	6.7	6.5	6.2	5.8	5.6	5.2	4.7		
50.0																8.0/49	7.5	7.3	7.0	6.6	6.3	6.1	5.9	5.6	5.4	5.1	4.8	4.3	
52.0																	7.0/51	6.6	6.4	6.1	5.8	5.6	5.4	5.1	4.8	4.5	4.3	3.8	
54.0																		6.1	5.9	5.6	5.3	5.0	4.8	4.6	4.3	4.0	3.8	3.4	
56.0																			5.4	5.1	4.8	4.5	4.4	4.1	3.9	3.6	3.4	3.0	
58.0																				5.1/57	4.6	4.4	4.1	3.9	3.7	3.5	3.2	3.0	2.7
60.0																					4.4/59	4.0	3.7	3.5	3.3	3.1	2.8	2.6	2.4
62.0																						3.6	3.3	3.1	2.9	2.7	2.5	2.3	2.1
64.0																							3.0	2.8	2.6	2.4	2.1		
B	8	8	8	8	8	7	6	6	6	6	5	5	4	4	4	3	3	3	3	3	3	2	2	2	2	2	2		

A = Working Radius (m), B = No. of Part-lines

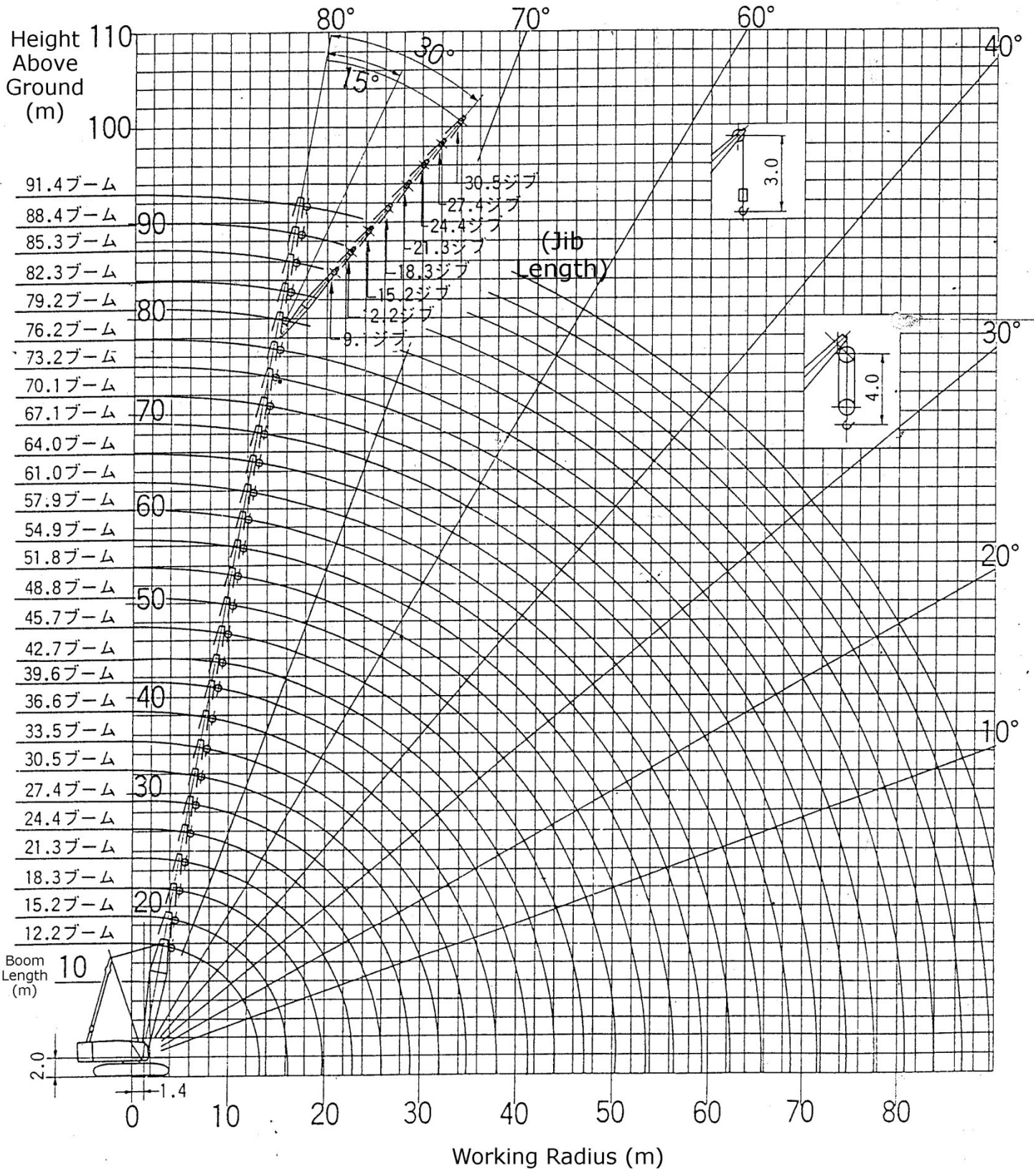
Rated Lifting Capacity (Taper Top Boom) (Cont')

1. The rated loads shown do not exceed 78% of the tipping load with the machine operating on firm level ground, and are not less than 1.15 times over-front stability stipulated by mobile crane construction standards.
Operator must reduce load ratings to take such conditions into account. Deduction from rated jib capacities must be made for weight of hook block, weighted ball/hook, sling, load weighing devices, or other suspended gear.

100 ton Hook	1.3 ton
40 ton Hook	1.0 ton (60.96m Boom and above)
60 ton Hook	1.0 ton (Optional)

2. Please use outrigger during lifting operation.
3. When boom length is longer than 73.15m, please use center support rope.
4. When boom length is longer than 60.96m, please use 40 ton Hook.
5. Lifting capacities marked with * is determined with the strength on the boom. Please do not overload the lifting capacities.
6. Please use the following for Crane Hoist Wire Rope.
 - a. Mono Rope EP 3 X F (a + 40) C Type \varnothing 28, breaking load 69.3ton
 - b. Tough Super T 7 X 7+ 6 X F (29) C Type \varnothing 28, breaking load 67.9 ton

Working Range



Jib Performance (Tilt jib)

- Lifting capacities on jib working radius.
 - When jib angle is 0°, use the lifting capacities of the boom and subtract the lifting load from Chart 1.
 - When jib is 15° or 30°, the lifting capacities remains the same as using boom.
 - In either cases, do not exceed the lifting capacities as shown in Chart 2.
- Chart 2 shows the maximum lifting capacities while using jib which 1 part-line (13 ton) is being used.
- Subtract the weight of the hook from the lifting capacity chart.
13 ton Hook = 0.5 ton
- When using main hook while jib is fixed on and auxiliary hook not in use, subtract 0.5 ton and the weight of the jib (shown below) from the lifting capacity.

9.144m jib	1.20 ton	21.336m jib	1.80 ton
12.192m jib	1.35 ton	24.384m jib	2.00 ton
15.240m jib	1.50 ton	27.432m jib	2.20 ton
18.288m jib	1.65 ton	30.480m jib	2.40 ton
- In a lifting operation, with jib attached, angle of the jib should not exceed 30°.
- When Jib is less than 20° against ground level, do not use.
- Jib maximum working radius is the same as boom maximum working radius.
- (Boom length + Jib length) Maximum combination are as follows

Hammer Head	45.7m boom + 30.5m jib
Taper Top	76.2m boom + 30.5m jib
	79.3m boom + 21.3m jib
- Below are the smallest possible length of the boom when jib can be used.

Hammer Head	21.3m
Taper Top	27.4m

Hook Type

Hook Capacity	Sheaves	Part-lines	Hook Weight	Remarks
200 ton	9	18~6	3.0 ton	Main, Standard for Hammer Head Boom
100 ton	4	8~4	1.3 ton	Main, Taper Top Boom (Option)
40 ton	Straight 2	3~2	1.0 ton	Main, when boom length is greater than 60.96m (Option)
13 ton	0	1	0.5 ton	Auxiliary, for jib use (Option)
65 ton	3	7~2	1.0 ton	Main (Option)

Chart 1

Jib Length (m)	Load to subtract
9.144	0.5
12.192	0.5
15.240	0.5
18.288	0.5
21.336	0.5
24.384	0.5
27.432	0.5
30.480	0.5

Chart 2

(t)

Jib Length (m)	Boom Angle	Jib Angle		
		0°	15°	30°
9.144	80°	13.0	13.0	13.0
	65°	13.0	13.0	13.0
	50°	13.0	13.0	12.3
	35°	13.0	12.3	—
	30°	13.0	—	—
12.192	80°	13.0	13.0	13.0
	65°	13.0	13.0	10.9
	50°	13.0	10.9	9.2
	35°	10.9	9.2	—
	30°	10.2	—	—
15.240	80°	13.0	13.0	11.5
	65°	13.0	11.5	8.6
	50°	11.5	8.6	7.4
	35°	8.6	7.4	—
	30°	8.1	—	—
18.288	80°	13.0	12.4	9.4
	65°	12.4	9.4	7.1
	50°	9.4	7.1	6.0
	35°	7.1	6.0	—
	30°	6.6	—	—
21.336	80°	13.0	10.2	7.9
	65°	10.2	7.9	5.9
	50°	7.9	5.9	5.0
	35°	5.9	5.0	—
	30°	5.5	—	—
24.384	80°	11.0	7.5	5.9
	65°	7.5	5.9	5.0
	50°	5.9	5.0	4.2
	35°	5.0	4.2	—
	30°	4.7	—	—
27.432	80°	8.6	5.6	4.3
	65°	5.6	4.3	3.6
	50°	4.3	3.6	3.3
	35°	3.6	3.3	—
	30°	3.5	—	—
30.480	80°	6.2	3.7	2.7
	65°	3.7	2.7	2.1
	50°	2.7	2.1	1.8
	35°	2.1	1.8	—
	30°	2.0	—	—