



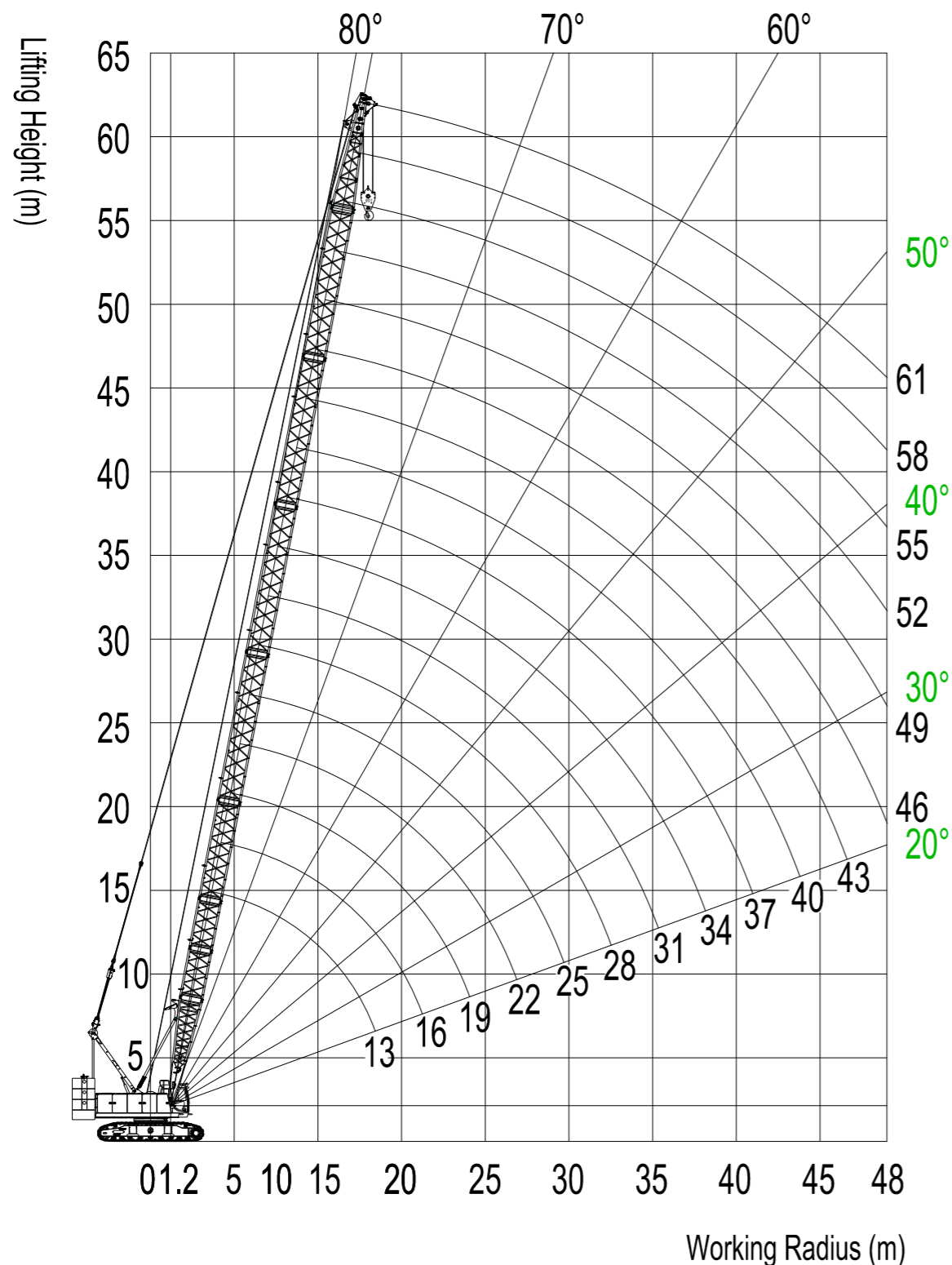
SANY

Quality Changes the World



SANY CRAWLER CRANE SCC 1000E

H OPERATING CONDITION RANGE



BOOM LOAD CHARTS(H OPERATING CONDITION)

SCC1000E Crawler Crane
H Operating Condition Load Chart

Unit: (t)

Radius (m)	Boom (m)									
	13	16	19	22	25	28	31	34		
3.6	100									
4	90									
4.5	80									
5	72	72								
5.5	65	65	65							
6	59.5	58.9	58.4	57.8						
6.5	52.6	52.1	51.7	51.3	50.7					
7	47.2	46.7	46.4	46	45.6	45.1				
7.5	42.7	42.3	42	41.7	41.3	41	40.5			
8	39	38.6	38.3	38	37.7	37.4	37.1	36.6		
9	33.2	32.8	32.6	32.4	32.1	31.8	31.6	31.3		
10	28.8	28.5	28.3	28.1	27.8	27.6	27.4	27.1		
11	25.4	25.1	24.9	24.8	24.5	24.3	24.1	23.8		
12	22.7	22.4	22.3	22.1	21.8	21.6	21.5	21.2		
13	20.5	20.2	20.1	19.9	19.7	19.5	19.3	19.1		
14		18.4	18.2	18.1	17.8	17.7	17.5	17.3		
15		16.8	16.7	16.5	16.3	16.1	16	15.8		
16		15.5	15.3	15.2	15	14.8	14.7	14.4		
18			13.2	13.1	12.8	12.7	12.5	12.3		
20				11.4	11.1	11	10.9	10.6		
22					9.8	9.7	9.5	9.3		
24						8.7	8.6	8.4	8.2	
26							7.6	7.5	7.3	
28								6.7	6.5	
30									6.1	5.8
32										5.3

¹Notes-Rated Load of Crane

- ² The rated load in the table is the value under the condition that the non-traveling heavy load is lifted slowly and steadily from the solid and flat ground.
 - ³ The rated load in the table is calculated based on 75% of the tipping load under wind speed of less than 9.8m/s.
 - ⁴ The rated load in the table includes the weight of hook; the actual lifting capacity is the rated load minus the weight of all hoisting tools.
 - ⁵ The length of installable boom is 37m~52m.
 - ⁶ The track frame shall be expanded during lifting.
- All values in load chart are applicable for 360°rotation.

BOOM LOAD CHARTS(H OPERATING CONDITION)

**SCC1000E Crawler Crane
H Operating Condition Load Chart**

Unit: (t)

Radius (m)	Boom (m)									
	37	40	43	46	49	52	55	58	61	
9	31									
10	26.9	26.7	26.4							
11	23.6	23.5	23.2	23	22.7					
12	21	20.9	20.6	20.4	20.3	20				
13	18.9	18.7	18.5	18.3	18.2	17.9	17.7			
14	17.1	17	16.7	16.5	16.4	16.2	16	15.7	14	
15	15.6	15.4	15.2	15	14.9	14.7	14.5	14.3	13.5	
16	14.3	14.1	13.9	13.7	13.6	13.4	13.2	13	12.7	
18	12.2	12	11.8	11.6	11.5	11.3	11.1	10.9	10.7	
20	10.5	10.4	10.1	10	9.8	9.6	9.5	9.3	9.1	
22	9.2	9	8.8	8.7	8.5	8.3	8.2	8	7.8	
24	8.1	7.9	7.7	7.6	7.4	7.2	7.1	6.9	6.7	
26	7.2	7	6.8	6.7	6.5	6.3	6.2	6	5.8	
28	6.4	6.3	6	5.9	5.8	5.5	5.4	5.2	5	
30	5.7	5.6	5.4	5.2	5.1	4.9	4.7	4.6	4.3	
32	5.1	5	4.8	4.6	4.5	4.3	4.2	4	3.8	
34	4.6	4.5	4.3	4.1	4	3.8	3.7	3.5	3.3	
36	4.2	4.1	3.8	3.7	3.6	3.3	3.2	3	2.8	
38		3.7	3.4	3.3	3.2	2.9	2.8	2.6	2.4	
40			3.1	2.9	2.8	2.6	2.5	2.3	2.1	
42				2.6	2.5	2.3	2.1	2	1.7	
44				2.3	2.2	2	1.8	1.7	1.5	
46					1.9	1.7	1.6	1.4	1.2	
48						1.5	1.3	1.2	0.9	

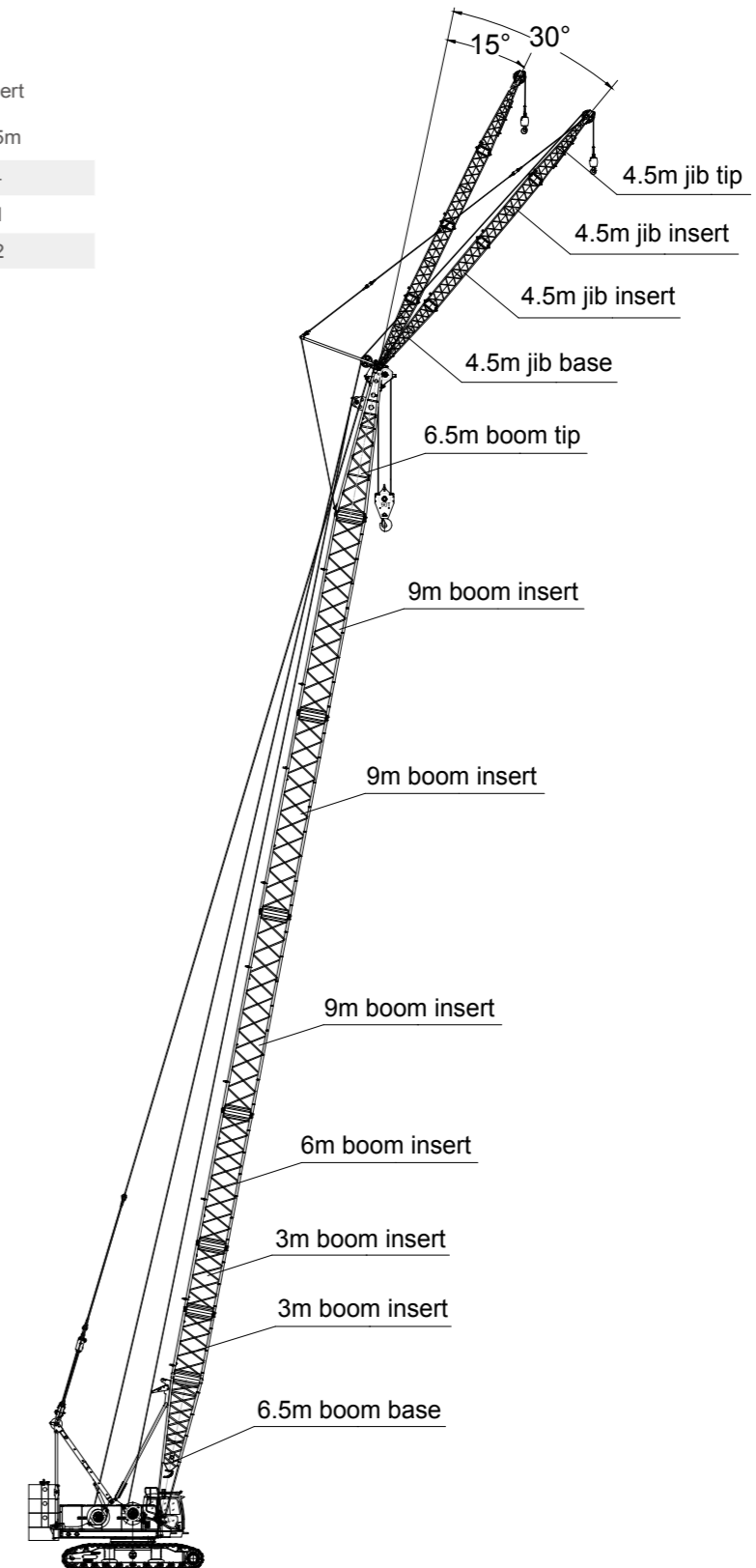
Notes-Rated Load of Crane

1. The rated load in the table is the value under the condition that the non-traveling heavy load is lifted slowly and steadily from the solid and flat ground.
2. The rated load in the table is calculated based on 75% of the tipping load under wind speed of less than 9.8m/s.
3. The rated load in the table includes the weight of hook; the actual lifting capacity is the rated load minus the weight of all hoisting tools.
4. The length of installable boom is 37m~52m.
5. The track frame shall be expanded during lifting.
6. All values in load chart are applicable for 360° rotation.

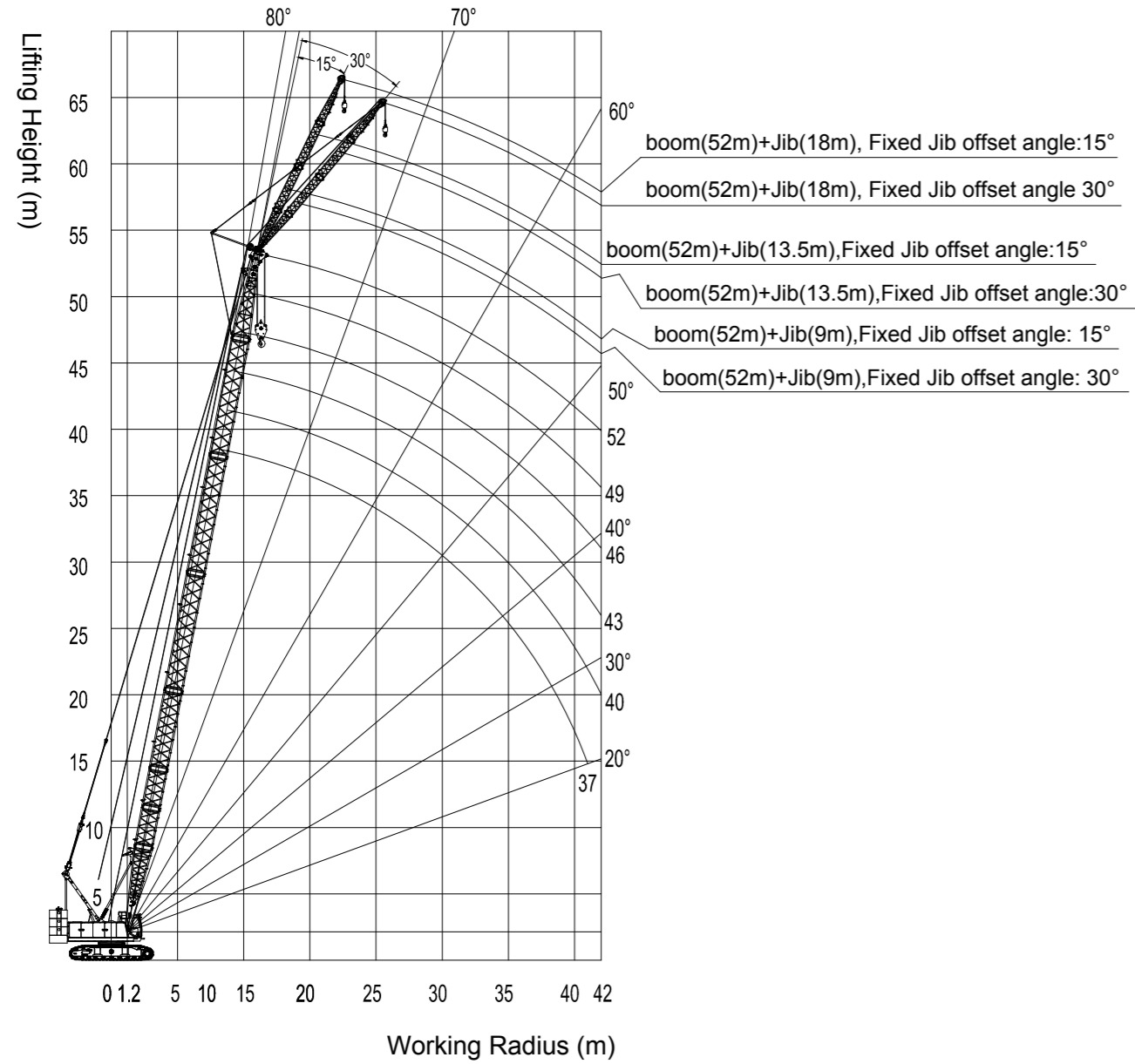
FIXED JIB OPERATING CONDITION

Jib Length	Insert
m	4.5m
9	-
13.5	1
18	2

Longest Boom+ jib: 52m+18m



FIXED JIB OPERATING RANGE



FIXED JIB LOAD CHARTS

SCC1000E Crawler Crane
Fixed Jib Load Chart

Unit: (t)

Boom Length (m)		37					
Jib length (m)		9		13.5		18	
Fixed jib offset angle/ working radius (m)		15°	30°	15°	30°	15°	30°
14		8					
15		8	8	7			
16		8	8	7	6.5		
18		8	8	7	6.5	5.5	
20		8	8	7	6.5	5.5	
22		8	8	7	6.5	5.5	5
24		7.8	8	7	6	5.5	4.5
26		6.9	7.1	7	6	5.5	4.5
28		6.2	6.3	6.3	5.5	5.5	4.2
30		5.5	5.6	5.6	5.5	5	4
32		5	5.1	5.1	5	5	4
34		4.5	4.6	4.6	4.7	4.6	3.9
36		4	4.1	4.1	4.3	4.2	3.8
38		3.7	3.7	3.7	3.9	3.8	3.7
40		3.3	3.4	3.4	3.5	3.4	3.6
42		3	3	3.1	3.2	3.1	3.2
Boom length (m)		40					
Jib length (m)		9		13.5		18	
Fixed jib offset angle/ working radius (m)		15°	30°	15°	30°	15°	30°
14		8					
15		8	8	7			
16		8	8	7	6.5		
18		8	8	7	6.5	5.5	
20		8	8	7	6.5	5.5	
22		8	8	7	6.5	5.5	5
24		7.7	7.9	7	6	5.5	4.5
26		6.8	7	6.9	6	5.5	4.5
28		6	6.2	6.1	5.5	5.5	4.5
30		5.4	5.5	5.5	5.5	5.5	4
32		4.9	5	4.9	5	4.5	4
34		4.4	4.5	4.5	4.6	4.5	4
36		3.9	4	4	4.2	4.1	3.9
38		3.5	3.6	3.6	3.8	3.7	3.8
40		3.2	3.3	3.3	3.4	3.3	3.5
42		2.9	2.9	3	3.1	3	3.1

FIXED JIB LOAD CHARTS

SCC1000E Crawler Crane Fixed Jib Load Chart

Unit: (t)

Boom Length (m)		43					
Jib length (m)	9		13.5		18		
Fixed jib offset angle/ working radius (m)	15°	30°	15°	30°	15°	30°	
14	8						
15	8						
16	8	8	7				
18	8	8	7				
20	8	8	7	6.5	5.5		
22	8	8	7	6.5	5.5	5	
24	7.5	7.7	7	6.5	5.5	5	
26	6.6	6.8	6.7	6	5.5	4.5	
28	5.9	6	6	6	5.5	4.5	
30	5.2	5.4	5.3	5.5	5	4	
32	4.7	4.8	4.8	5	4.5	4	
34	4.2	4.3	4.3	4.5	4	4	
36	3.7	3.8	3.8	4	3.9	4	
38	3.4	3.4	3.4	3.6	3.5	3.7	
40	3	3.1	3.1	3.2	3.1	3.3	
42	2.7	2.8	2.8	2.9	2.8	3	
Boom length (m)		46					
Jib length (m)	9		13.5		18		
Fixed jib offset angle/ working radius (m)	15°	30°	15°	30°	15°	30°	
14	8						
15	8						
16	8	8	7				
18	8	8	7				
20	8	8	7	6.5	5.5		
22	8	8	7	6.5	5.5		
24	7.3	7.6	7	6.5	5.5	5	
26	6.5	6.7	6.6	6	5.5	4.5	
28	5.7	5.9	5.8	6	5.5	4.5	
30	5.1	5.3	5.2	5.5	5	4.5	
32	4.5	4.7	4.6	4.9	4.7	4	
34	4	4.2	4.1	4.4	4.2	4	
36	3.6	3.7	3.7	3.9	3.8	4	
38	3.2	3.3	3.3	3.5	3.4	3.6	
40	2.9	3	3	3.1	3	3.2	
42	2.6	2.6	2.7	2.8	2.7	2.9	

FIXED JIB LOAD CHARTS

SCC1000E Crawler Crane Fixed Jib Load Chart

Unit: (t)

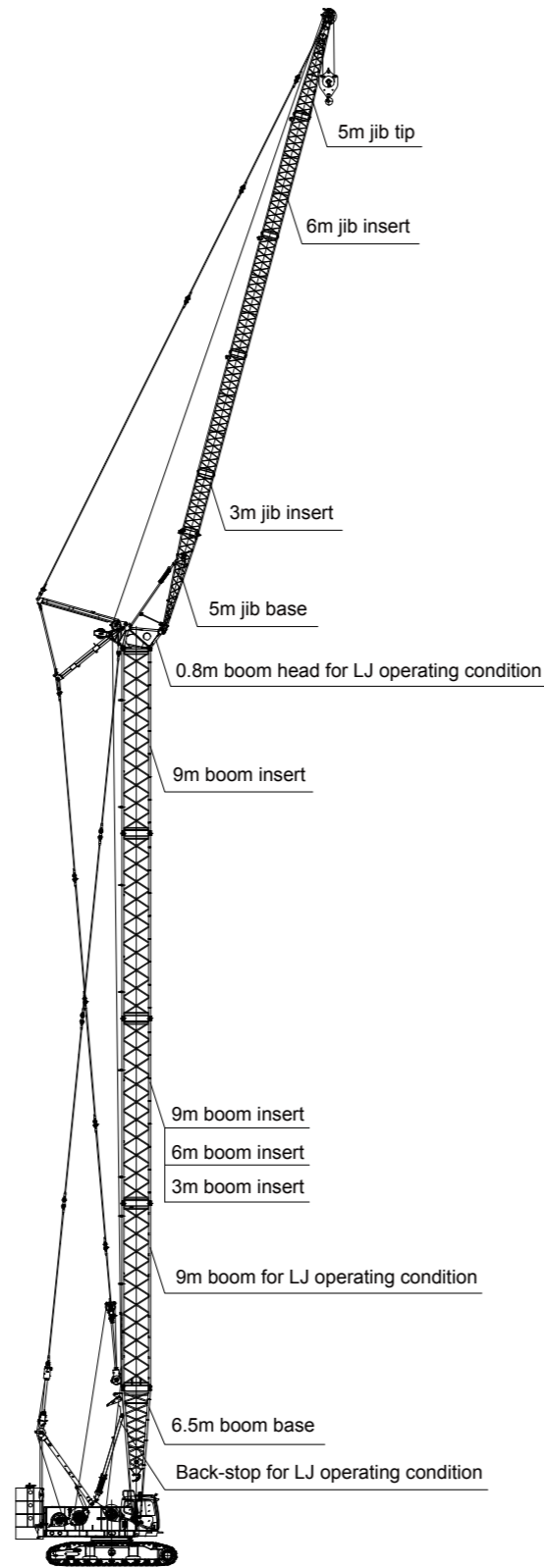
Boom Length (m)		49					
Jib length (m)	9		13.5		18		
Fixed jib offset angle/ working radius (m)	15°	30°	15°	30°	15°	30°	
14							
15	8						
16	8	8	7				
18	8	8	7				
20	8	8	7	6.5	5.5		
22	8	8	7	6.5	5.5		
24	7.2	7.5	7	6.5	5.5	5	
26	6.3	6.6	6.5	6	5.5	4.5	
28	5.6	5.8	5.7	5.5	5.5	4.5	
30	5	5.1	5.1	5.4	5.2	4.5	
32	4.4	4.6	4.5	4.8	4.6	4	
34	3.9	4.1	4	4.3	4.1	4	
36	3.5	3.6	3.6	3.8	3.7	3.9	
38	3.1	3.2	3.2	3.4	3.3	3.5	
40	2.8	2.9	2.9	3	2.9	3.1	
42	2.5	2.5	2.5	2.7	2.6	2.8	
Boom length (m)		52					
Jib length (m)	9		13.5		18		
Fixed jib offset angle/ working radius (m)	15°	30°	15°	30°	15°	30°	
14							
15	8						
16	8	8	7				
18	8	8	7				
20	8	8	7	6.5	5.5		
22	8	8	7	6.5	5.5		
24	7	7.3	7	6.5	5.5	5	
26	6.2	6.4	6.3	6.5	5.5	5	
28	5.4	5.6	5.6	5.5	5.5	4.5	
30	4.8	5	4.9	5.2	5	4.5	
32	4.2	4.4	4.3	4.6	4.4	4	
34	3.7	3.9	3.9	4.1	3.9	4	
36	3.3	3.4	3.4	3.6	3.5	3.8	
38	2.9	3	3	3.2	3.1	3.4	
40	2.6	2.7	2.7	2.9	2.7	3	
42	2.3	2.4	2.4	2.5	2.4	2.6	

LJ OPERATING CONDITION

Boom Length (m)	Insert			
	Special 9m	3m	6m	9m
25.3	1	-	-	1
28.3	1	1	-	1
31.3	1	-	1	1
34.3	1	-	-	2
37.3	1	1	-	2
40.3	1	-	1	2
43.3	1	-	-	3

Jib length (m)	Insert	
	3m	6m
19	1	1
22	-	2
25	1	2
28	-	3
31	1	3

Longest boom+jib: 43.3m+31m



LJ OPERATING CONDITION RANGE

