

## HYDRAULIC CRAWLER CRANE *CKL1000i*

Model: CKL1000i

HYDRAULIC CRAWLER CRANE  
*CKL1000i*

### Standard Equipment

#### Upper structure/Lower structure

Counterweight: 29.3 ton (total weight)  
Carbody weight: 7.3 ton (total weight)  
800 mm shoe crawlers  
Batteries (170Ah/20HR)  
Travel kit  
Gantry raising/lowering cylinder  
Electric hand throttle grip  
Variable boom hoist speed controller  
Variable main/aux. hoist speed controller  
Side deck for cab  
Steps (crawlers)  
Two front working lights  
Upper spreader storage guide  
Tools (for routine maintenance)  
Two rear view mirrors  
Mirror for monitoring drums  
Electric fuel pump  
Counterweight self-removal  
Cable roller (for boom)  
Tool box (front of left-side guard)

#### Cab/Control

Air conditioner  
Cup holder  
Ashtray  
Cigar lighter  
Intermittent wiper & window washer (skylight and front window)  
Sun visor  
Roof blind  
Floor mat (cloth)  
Foot rest  
Shoe tray  
Level gauge (operator cabin)

#### Safety Device

Load Moment Indicator (with boom lowering slow stop function)  
LMI release key (for hook over-hoist prevention device and boom over-hoist prevention device)  
LCD multi display  
Ultimate stop function for boom over-hoist  
Function lock lever  
Propel lever lock  
Mechanical drum lock pawl (main, aux. and boom hoist)  
Signal horn  
Swing parking brake  
Mechanical swing lock pin (four positions)  
Swing flashers/warning buzzer  
External lamp for over-load alarm



**Note:** Standard equipment may vary depending on your areas or countries.  
Due to our policy of continual product improvements all designs and specifications are subject to change without advance notice.  
Copyright by KOBELCO CRANES CO., LTD. No part of this catalog may be reproduced in any manner without notice.



### KOBELCO CRANES INDIA PVT. LTD.

H-200, Sector-63, Noida,  
Distt: Gautam Budh Nagar, Uttar Pradesh-201, 307, India  
Tel: +91-120-407-9989 Fax: +91-120-407-9990

Inquiries To:

**KOBELCO** is the corporate mark used by Kobe Steel on a variety of products and in the names of a number of Kobe Steel Group companies.

Bulletin No. CKL1000i-SPEC Printed in India

**Max. Lifting Capacity: 100 t x 3.0 m\***  
**Max. Crane Boom Length: 61.0 m**  
**Max. Fixed Jib Combination: 51.8 m + 18.3 m**

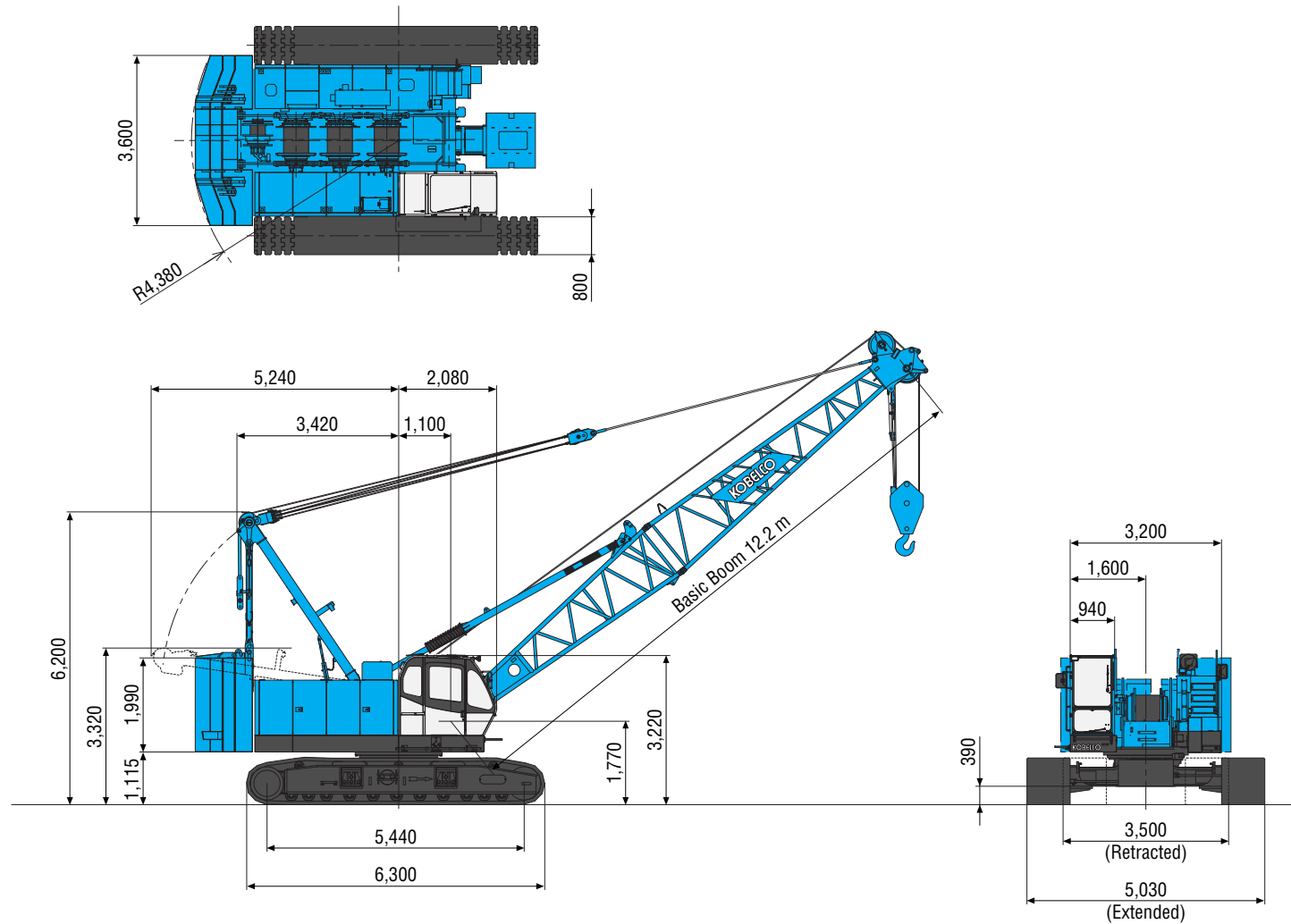
\*Auxiliary sheave is necessary.

# GENERAL DIMENSIONS

# BOOM AND JIB ARRANGEMENTS

## Crane Boom

(Unit: mm)



## Crane Boom Arrangements

Boom length m (ft)	Boom arrangement
12.2 (40)	
15.2 (50)	
18.3 (60)	
21.3 (70)	
24.4 (80)	
27.4 (90)	
30.5 (100)	
33.5 (110)	
36.6 (120)	
39.6 (130)	

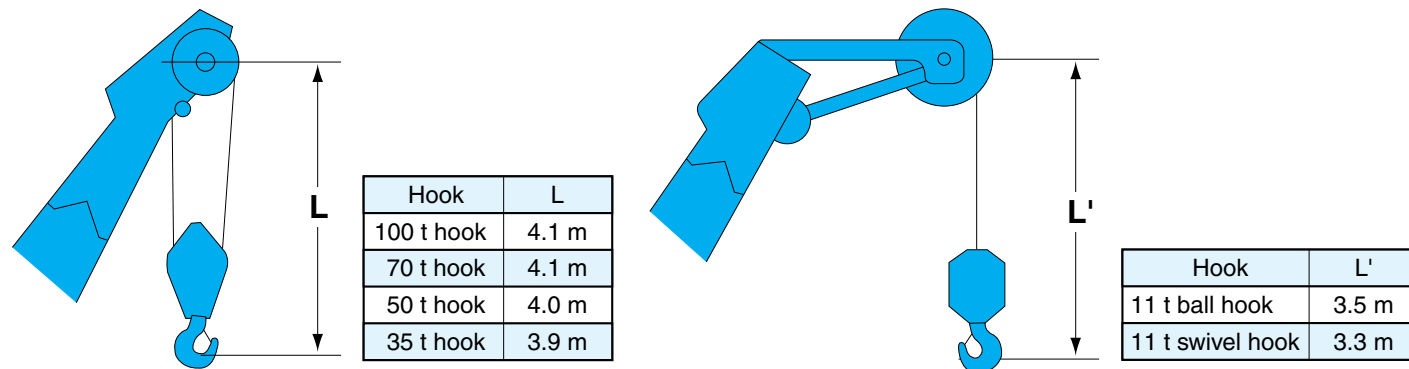
Boom length m (ft)	Boom arrangement
42.7 (140)	
45.7 (150)	
48.8 (160)	
51.8 (170)	
54.9 (180)	
57.9 (190)	
61.0 (200)	

Symbol	Boom Length	Remarks
	5.8 m	Boom Base
	6.4 m	Boom Top
	3.0 m	Insert Boom
	6.1 m	Insert Boom
	12.2 m	Insert Boom
	12.2 m	Insert Boom with lug

↗ mark shows the guy line installing position when the fixed jib is used.

※ Indicates the most flexible combination of insert booms, which can be modified to form all shorter boom arrangements.

## Limit of Hook Lifting



## Fixed Jib Arrangements

Crane boom length	Jib length m (ft)	Jib arrangement
24.4 m	9.1 (30)	
	12.2 (40)	
51.8 m	15.2 (50)	
	18.3 (60)	

Symbol	Jib Length	Remarks
	4.6 m	Jib Base
	4.6 m	Jib Top
	3.0 m	Insert Jib
	6.1 m	Insert Jib