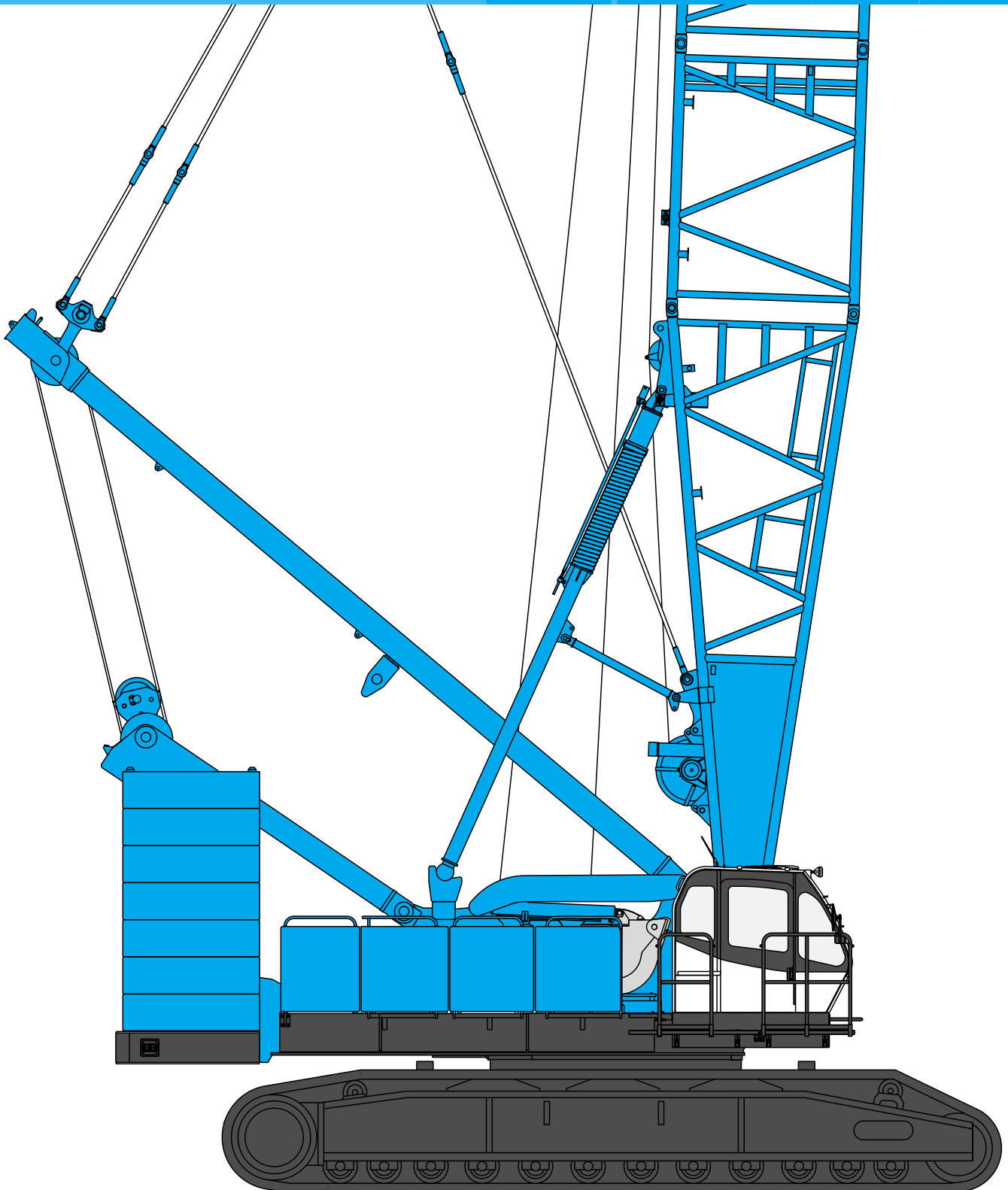


**KOBELCO**

HYDRAULIC CRAWLER CRANE

# ***CKE2500***

Model: CKE2500-2



**Max. Lifting Capacity: 250 t x 4.6 m**  
**Max. Crane Boom Length: 91.4 m**  
**Max. Fixed Jib Combination: 76.2 + 30.5 m**  
**Max. Luffing Jib Combination: 61.0 + 61.0 m**



# Crane Boom Lifting Capacity

Unit: metric ton

Counterweight: 90.0 t, Carbody weight: 24.0 t

Working radius (m) \ Boom Length (m)	15.2	18.3	21.3	24.4	27.4	30.5	33.5	36.6	39.6	42.7	45.7	48.8	51.8	Boom Length (m) \ Working radius (m)
4.6	4.6 m/250.0													4.6
5.0	230.7	226.7	5.5m/205.0											5.0
6.0	191.5	191.5	191.1	6.1 m/183.0	6.6 m/174.5									6.0
7.0	165.9	165.6	165.2	165.0	164.7	7.1 m/154.2	7.7 m/143.8							7.0
8.0	146.1	145.8	145.4	145.2	144.9	144.6	141.4	8.2 m/127.3	8.7 m/115.7					8.0
9.0	130.4	130.1	129.8	129.6	129.2	127.0	127.3	123.8	114.8	9.2 m/107.2	9.8 m/98.3			9.0
10.0	117.7	117.4	117.1	116.9	114.7	115.0	113.3	110.5	107.4	103.8	97.0	10.3 m/92.6	10.8 m/84.7	10.0
12.0	90.0	90.2	90.2	90.2	90.2	90.1	90.0	89.9	87.8	85.9	83.8	82.0	79.5	12.0
14.0	72.2	72.4	72.4	72.4	72.3	72.2	72.1	72.0	72.0	72.0	70.8	69.4	68.0	14.0
16.0	14.8 m/65.7	60.2	60.2	60.2	60.0	59.9	59.8	59.8	59.7	59.6	59.4	59.3	58.7	16.0
18.0		17.5 m/53.5	51.3	51.3	51.1	51.1	50.9	50.8	50.7	50.7	50.4	50.3	50.2	18.0
20.0			44.6	44.6	44.4	44.3	44.1	44.0	43.9	43.9	43.6	43.5	43.4	20.0
22.0			20.1m/44.3	39.3	39.1	39.0	38.7	38.7	38.6	38.5	38.3	38.2	38.0	22.0
24.0				22.7 m/37.6	34.8	34.7	34.5	34.4	34.3	34.2	34.0	33.8	33.7	24.0
26.0					25.4 m/32.3	31.3	30.9	30.8	30.7	30.7	30.4	30.3	30.1	26.0
28.0						28.3	28.0	27.9	27.8	27.7	27.4	27.3	27.1	28.0
30.0							25.5	25.4	25.2	25.2	24.9	24.8	24.6	30.0
32.0							30.7 m/24.8	23.4	23.1	23.0	22.7	22.6	22.4	32.0
34.0								33.3 m/22.1	21.2	21.1	20.8	20.7	20.5	34.0
36.0									35.9 m/19.7	19.5	19.2	19.1	18.9	36.0
38.0										18.0	17.7	17.6	17.4	38.0
40.0										38.6 m/17.6	16.4	16.3	16.1	40.0
42.0											41.2 m/15.7	15.2	14.9	42.0
44.0												43.9 m/14.2	13.9	44.0
46.0													13.0	46.0
48.0													46.5 m/12.8	48.0
Reeves	22	18	16	14	14	12	12	10	10	8	8	7	7	Reeves

Working radius (m) \ Boom Length (m)	54.9	57.9	61.0	64.0	67.1	70.1	73.2	76.2	79.3	82.3	85.3	88.4	91.4	Boom Length (m) \ Working radius (m)
10.0	11.4 m/81.4	11.9 m/76.1												10.0
12.0	78.0	75.5	12.4 m/68.8	12.9 m/67.5	13.5 m/63.8									12.0
14.0	66.5	65.2	63.3	62.5	61.3	59.4	14.5 m/54.5	15.1 m/49.1	15.6 m/44.7					14.0
16.0	57.5	56.4	55.4	54.2	53.2	51.2	48.4	44.5	41.1	16.1 m/40.9	16.6 m/37.4	17.2 m/33.8	17.7 m/31.0	16.0
18.0	50.0	49.5	48.6	47.6	46.8	45.6	44.9	44.2	43.2	39.7	36.6	33.3	30.9	18.0
20.0	43.2	43.0	42.9	42.2	41.5	40.6	39.9	39.2	38.4	37.6	35.4	32.2	29.8	20.0
22.0	37.8	37.7	37.5	37.3	37.2	36.5	35.7	35.1	34.4	33.6	32.9	31.2	28.8	22.0
24.0	33.5	33.3	33.2	32.9	32.9	32.6	32.2	31.6	30.9	30.2	29.6	29.2	27.7	24.0
26.0	29.9	29.7	29.6	29.4	29.3	29.0	28.9	28.6	28.0	27.3	26.8	26.3	25.7	26.0
28.0	26.9	26.8	26.6	26.4	26.3	26.0	25.9	25.8	25.4	24.8	24.3	23.9	23.3	28.0
30.0	24.4	24.2	24.1	23.8	23.7	23.5	23.3	23.2	23.0	22.6	22.1	21.7	21.2	30.0
32.0	22.2	22.0	21.9	21.6	21.5	21.3	21.1	21.0	20.8	20.5	20.2	19.8	19.3	32.0
34.0	20.3	20.1	20.0	19.7	19.6	19.4	19.2	19.1	18.9	18.6	18.4	18.1	17.6	34.0
36.0	18.6	18.5	18.3	18.1	17.9	17.7	17.5	17.4	17.2	16.9	16.8	16.6	16.1	36.0
38.0	17.2	17.0	16.9	16.6	16.5	16.2	16.0	15.9	15.7	15.4	15.3	15.2	14.7	38.0
40.0	15.9	15.7	15.5	15.3	15.2	14.9	14.7	14.6	14.4	14.1	13.9	13.8	13.5	40.0
42.0	14.7	14.5	14.4	14.1	14.0	13.7	13.5	13.4	13.2	12.9	12.8	12.7	12.4	42.0
44.0	13.7	13.5	13.3	13.0	12.9	12.6	12.5	12.3	12.1	11.8	11.7	11.6	11.3	44.0
46.0	12.7	12.5	12.4	12.1	12.0	11.7	11.5	11.4	11.2	10.9	10.7	10.6	10.4	46.0
48.0	11.9	11.6	11.5	11.2	11.1	10.8	10.7	10.5	10.3	10.0	9.8	9.7	9.4	48.0
50.0	49.1 m/11.4	10.9	10.7	10.4	10.3	10.0	9.9	9.7	9.5	9.1	8.9	8.8	8.5	50.0
52.0		51.8 m/10.2	10.0	9.7	9.6	9.3	9.1	8.9	8.7	8.3	8.1	8.0	7.7	52.0
54.0			9.3	9.1	8.9	8.6	8.4	8.2	7.9	7.6	7.4	7.2	7.0	54.0
56.0			54.4 m/9.2	8.4	8.3	7.9	7.7	7.5	7.2	6.9	6.7	6.5	6.3	56.0
58.0				57.1 m/8.1	7.7	7.3	7.1	6.9	6.6	6.3	6.1	5.9	5.6	58.0
60.0					59.7 m/7.2	6.7	6.5	6.3	6.0	5.7	5.5	5.3	5.0	60.0
62.0						6.2	6.0	5.8	5.5	5.1	4.9	4.8	4.5	62.0
64.0						62.3 m/6.1	5.5	5.3	5.0	4.6	4.4	4.3	4.0	64.0
66.0							65.0 m/5.3	4.8	4.5	4.2	4.0	3.8	3.5	66.0
68.0								67.6 m/4.5	4.1	3.7	3.5	3.3	2.9	68.0
70.0									3.7	3.3	3.1	2.9	2.4	70.0
72.0									70.2 m/3.6	2.9	2.7	2.5		72.0
74.0										72.9 m/2.8	2.4			74.0
Reeves	7	6	6	5	5	5	5	4	4	4	3	3	3	Reeves

Note: Ratings according to EN13000.

Ratings shown in   are determined by the strength of the boom or other structural components.

Refer to notes P12.



# HYDRAULIC CRAWLER CRANE LKE 2500

## Auxiliary Sheave Lifting Capacity for Crane Boom (With 70 t Main Hook)

Unit: metric ton

Counterweight: 90.0 t, Carbody weight: 24.0 t

Working radius (m)	Boom Length (m)													Working radius (m)
	15.2	18.3	21.3	24.4	27.4	30.5	33.5	36.6	39.6	42.7	45.7	48.8	51.8	
5.0	5.4 m/27.0	5.8 m/27.0												5.0
6.0	27.0	27.0	6.3 m/27.0	6.9 m/27.0										6.0
7.0	27.0	27.0	27.0	27.0	7.4 m/27.0	7.9 m/27.0								7.0
8.0	27.0	27.0	27.0	27.0	27.0	27.0	8.5 m/27.0							8.0
9.0	27.0	27.0	27.0	27.0	27.0	27.0	27.0	27.0	9.5 m/27.0					9.0
10.0	27.0	27.0	27.0	27.0	27.0	27.0	27.0	27.0	27.0	27.0	10.6 m/27.0	11.1 m/27.0	11.6 m/27.0	10.0
12.0	27.0	27.0	27.0	27.0	27.0	27.0	27.0	27.0	27.0	27.0	27.0	27.0	27.0	12.0
14.0	27.0	27.0	27.0	27.0	27.0	27.0	27.0	27.0	27.0	27.0	27.0	27.0	27.0	14.0
16.0	27.0	27.0	27.0	27.0	27.0	27.0	27.0	27.0	27.0	27.0	27.0	27.0	27.0	16.0
18.0	16.5 m/27.0	19.2 m/27.0	27.0	27.0	27.0	27.0	27.0	27.0	27.0	27.0	27.0	27.0	27.0	18.0
20.0			27.0	27.0	27.0	27.0	27.0	27.0	27.0	27.0	27.0	27.0	27.0	20.0
22.0			21.8 m/27.0	27.0	27.0	27.0	27.0	27.0	27.0	27.0	27.0	27.0	27.0	22.0
24.0				27.0	27.0	27.0	27.0	27.0	27.0	27.0	27.0	27.0	27.0	24.0
26.0				24.4 m/27.0	27.0	27.0	27.0	27.0	27.0	27.0	27.0	27.0	27.0	26.0
28.0					27.1 m/26.6	26.4	26.5	26.4	26.3	26.2	25.9	25.8	25.6	28.0
30.0						29.7 m/23.5	24.0	23.9	23.7	23.7	23.4	23.3	23.1	30.0
32.0							32.4 m/21.0	21.9	21.6	21.5	21.2	21.1	20.9	32.0
34.0								19.9	19.7	19.6	19.3	19.2	19.0	34.0
36.0								35.0 m/18.9	17.8	18.0	17.7	17.6	17.4	36.0
38.0									37.6 m/16.3	16.5	16.2	16.1	15.9	38.0
40.0										15.0	14.9	14.8	14.6	40.0
42.0										40.3 m/14.8	13.6	13.7	13.4	42.0
44.0											42.9 m/13.0	12.6	12.4	44.0
46.0												45.6 m/11.7	11.5	46.0
48.0													10.6	48.0
50.0													48.2 m/10.5	50.0
Reeves	2	2	2	2	2	2	2	2	2	2	2	2	2	Reeves

Working radius (m)	Boom Length (m)												Working radius (m)
	54.9	57.9	61.0	64.0	67.1	70.1	73.2	76.2	79.3	82.3	85.3	88.4	
12.0	12.2 m/27.0	12.7 m/27.0	13.2 m/27.0	13.7 m/27.0									12.0
14.0	27.0	27.0	27.0	27.0	14.3 m/27.0	14.8 m/27.0	15.3 m/27.0	15.9 m/27.0					14.0
16.0	27.0	27.0	27.0	27.0	27.0	27.0	27.0	27.0	16.4 m/27.0	16.9 m/27.0	17.4 m/27.0		16.0
18.0	27.0	27.0	27.0	27.0	27.0	27.0	27.0	27.0	27.0	27.0	27.0	27.0	18.0
20.0	27.0	27.0	27.0	27.0	27.0	27.0	27.0	27.0	27.0	27.0	27.0	27.0	20.0
22.0	27.0	27.0	27.0	27.0	27.0	27.0	27.0	27.0	27.0	27.0	27.0	27.0	22.0
24.0	27.0	27.0	27.0	27.0	27.0	27.0	27.0	27.0	27.0	27.0	27.0	27.0	24.0
26.0	27.0	27.0	27.0	27.0	27.0	27.0	27.0	27.0	26.5	25.8	25.3	24.8	26.0
28.0	25.4	25.3	25.1	24.9	24.8	24.5	24.4	24.3	23.9	23.3	22.8	22.4	28.0
30.0	22.9	22.7	22.6	22.3	22.2	22.0	21.8	21.7	21.5	21.1	20.6	20.2	30.0
32.0	20.7	20.5	20.4	20.1	20.0	19.8	19.6	19.5	19.3	19.0	18.7	18.3	32.0
34.0	18.8	18.6	18.5	18.2	18.1	17.9	17.7	17.6	17.4	17.1	16.9	16.6	34.0
36.0	17.1	17.0	16.8	16.6	16.4	16.2	16.0	15.9	15.7	15.4	15.3	15.1	36.0
38.0	15.7	15.5	15.4	15.1	15.0	14.7	14.5	14.4	14.2	13.9	13.8	13.7	38.0
40.0	14.4	14.2	14.0	13.8	13.7	13.4	13.2	13.1	12.9	12.6	12.4	12.3	40.0
42.0	13.2	13.0	12.9	12.6	12.5	12.2	12.0	11.9	11.7	11.4	11.3	11.2	42.0
44.0	12.2	12.0	11.8	11.5	11.4	11.1	11.0	10.8	10.6	10.3	10.2	10.1	44.0
46.0	11.2	11.0	10.9	10.6	10.5	10.2	10.0	9.9	9.7	9.4	9.2	9.1	46.0
48.0	10.4	10.1	10.0	9.7	9.6	9.3	9.2	9.0	8.8	8.5	8.3	8.2	48.0
50.0	9.6	9.4	9.2	8.9	8.8	8.5	8.4	8.2	8.0	7.6	7.4	7.3	50.0
52.0	50.8 m/9.3	8.7	8.5	8.2	8.1	7.8	7.6	7.4	7.2	6.8	6.6	6.5	52.0
54.0		53.5 m/8.2	7.8	7.6	7.4	7.1	6.9	6.7	6.4	6.1	5.9	5.7	54.0
56.0			7.1	6.9	6.8	6.4	6.2	6.0	5.7	5.4	5.2	5.0	56.0
58.0			56.1 m/7.1	6.2	6.2	5.8	5.6	5.4	5.1	4.8	4.6	4.4	58.0
60.0				58.8 m/5.9	5.6	5.2	5.0	4.8	4.5	4.2	4.0	3.8	60.0
62.0					61.4 m/5.2	4.7	4.5	4.3	4.0	3.6	3.4	3.3	62.0
64.0						4.2	4.0	3.8	3.5	3.1	2.9	2.8	64.0
66.0							3.5	3.3	3.0	2.7	2.5		66.0
68.0							66.7 m/3.3	2.8	2.6				68.0
70.0								69.3 m/2.5					70.0
Reeves	2	2	2	2	2	2	2	2	2	2	2	2	Reeves

Note: Ratings according to EN13000.

Ratings shown in   are determined by the strength of the boom or other structural components.

Refer to notes P12.



# HYDRAULIC CRAWLER CRANE LKF 2500

## Luffing Boom Lifting Capacity

Unit: metric ton

Counterweight: 90.0 t, Carbody weight: 24.0 t

Working radius (m)	Boom length (m)		21.3	24.4	27.4	30.5	33.5	36.6	39.6	42.7	45.7	Working radius (m)	
	15.2	18.3										5.0	5.0
5.0	5.4 m/150.0	5.9 m/143.6											5.0
6.0	150.0	143.6	6.4 m/143.8										6.0
7.0	150.0	143.6	143.8	144.2	7.5 m/144.6								7.0
8.0	144.9	143.6	143.8	144.0	143.8	132.2	8.6 m/116.0						8.0
9.0	129.2	128.9	128.8	128.4	128.2	123.8	114.6	9.1 m/111.3	9.6 m/100.0				9.0
10.0	116.5	116.2	116.0	115.7	114.0	111.8	109.7	107.7	98.5	10.1 m/95.1	10.7 m/83.0		10.0
12.0	88.9	88.8	88.7	88.6	88.5	88.4	88.3	88.2	86.9	84.9	78.8		12.0
14.0	71.2	71.1	71.0	70.9	70.8	70.7	70.6	70.5	70.4	70.3	70.2		14.0
16.0	15.3 m/61.6	59.2	59.1	59.0	58.9	58.8	58.7	58.6	58.5	58.4	58.3		16.0
18.0		17.9 m/50.7	50.5	50.4	50.3	50.2	50.1	50.0	49.9	49.8	49.7		18.0
20.0			43.8	43.7	43.6	43.5	43.4	43.3	43.2	43.0	42.9		20.0
22.0			20.6 m/42.2	38.4	38.3	38.2	38.1	38.0	37.9	37.6	37.5		22.0
24.0				23.2 m/35.7	34.1	33.9	33.8	33.7	33.6	33.3	33.2		24.0
26.0					25.8 m/30.8	30.4	30.3	30.2	30.0	29.8	29.7		26.0
28.0						27.4	27.3	27.2	27.1	26.8	26.7		28.0
30.0						28.5 m/26.8	24.9	24.8	24.6	24.3	24.2		30.0
32.0							31.1 m/23.7	22.6	22.4	22.2	22.1		32.0
34.0								33.8 m/21.0	20.6	20.3	20.2		34.0
36.0									18.9	18.6	18.5		36.0
38.0									36.4 m/18.6	17.2	17.1		38.0
40.0										39.0 m/16.5	15.9		40.0
42.0											41.7 m/15.0		42.0
44.0													44.0
46.0													46.0
Reeves	12	12	12	12	12	10	10	10	8	8	7		Reeves

Working radius (m)	Boom length (m)		54.9	57.9	61.0	Working radius (m)	
	48.8	51.8				10.0	10.0
10.0	11.2 m/81.0	11.7 m/77.9					10.0
12.0	77.3	76.1	12.3 m/73.2	12.8 m/69.2	13.3 m/65.2		12.0
14.0	68.7	64.9	63.8	63.0	62.0		14.0
16.0	58.2	58.0	56.8	54.8	54.0		16.0
18.0	49.6	49.5	49.3	48.9	47.9		18.0
20.0	42.8	42.7	42.5	42.4	42.2		20.0
22.0	37.4	37.3	37.1	37.0	36.9		22.0
24.0	33.1	33.0	32.8	32.7	32.5		24.0
26.0	29.6	29.5	29.2	29.1	29.0		26.0
28.0	26.6	26.5	26.3	26.2	26.0		28.0
30.0	24.1	24.0	23.7	23.6	23.4		30.0
32.0	21.9	21.8	21.5	21.4	21.3		32.0
34.0	20.0	19.9	19.6	19.5	19.4		34.0
36.0	18.4	18.3	18.0	17.9	17.7		36.0
38.0	16.9	16.8	16.5	16.4	16.2		38.0
40.0	15.6	15.5	15.2	15.1	14.9		40.0
42.0	14.5	14.3	14.1	14.0	13.7		42.0
44.0	13.5	13.3	13.0	12.9	12.7		44.0
46.0	44.3 m/13.3	12.4	12.1	12.0	11.7		46.0
48.0		47.0 m/11.9	11.2	11.1	10.9		48.0
50.0			49.6 m/10.6	10.4	10.1		50.0
52.0				9.7	9.4		52.0
54.0				52.2 m/9.6	8.7		54.0
56.0					54.9 m/8.4		56.0
58.0							58.0
60.0							60.0
62.0							62.0
Reeves	6	6	6	6	5		Reeves

Note: Ratings according to EN13000.

Ratings shown in   are determined by the strength of the boom or other structural components.

Refer to notes P15.



# Auxiliary Sheave Lifting Capacity for Luffing Boom (With 70 t Main Hook)

Unit: metric ton

**Counterweight: 90.0 t, Carbody weight: 24.0 t**

Working radius (m)	15.2		18.3		21.3		24.4		27.4		30.5		33.5		36.6		39.6		42.7		45.7		Working radius (m)
	6.0	7.0	8.0	9.0	10.0	12.0	14.0	16.0	18.0	20.0	22.0	24.0	26.0	28.0	30.0	32.0	34.0	36.0	38.0	40.0	42.0	44.0	
6.0	6.2 m/13.5	6.7 m/13.5																					6.0
7.0	13.5	13.5	7.2 m/13.5	7.8 m/13.5																			7.0
8.0	13.5	13.5	13.5	13.5	8.3 m/13.5	8.8 m/13.5																	8.0
9.0	13.5	13.5	13.5	13.5	13.5	13.5	9.4 m/13.5	9.9 m/13.5															9.0
10.0	13.5	13.5	13.5	13.5	13.5	13.5	13.5	13.5	10.4 m/13.5	10.9 m/13.5	11.5 m/13.5												10.0
12.0	13.5	13.5	13.5	13.5	13.5	13.5	13.5	13.5	13.5	13.5	13.5	13.5											12.0
14.0	13.5	13.5	13.5	13.5	13.5	13.5	13.5	13.5	13.5	13.5	13.5	13.5											14.0
16.0	13.5	13.5	13.5	13.5	13.5	13.5	13.5	13.5	13.5	13.5	13.5	13.5											16.0
18.0	16.6 m/13.5	19.2 m/13.5	13.5	13.5	13.5	13.5	13.5	13.5	13.5	13.5	13.5	13.5											18.0
20.0			13.5	13.5	13.5	13.5	13.5	13.5	13.5	13.5	13.5	13.5											20.0
22.0			21.9 m/13.5	13.5	13.5	13.5	13.5	13.5	13.5	13.5	13.5	13.5											22.0
24.0				13.5	13.5	13.5	13.5	13.5	13.5	13.5	13.5	13.5											24.0
26.0				24.5 m/13.5	13.5	13.5	13.5	13.5	13.5	13.5	13.5	13.5											26.0
28.0					27.1 m/13.5	13.5	13.5	13.5	13.5	13.5	13.5	13.5											28.0
30.0						29.8 m/13.5	13.5	13.5	13.5	13.5	13.5	13.5											30.0
32.0							32.4 m/13.5	13.5	13.5	13.5	13.5	13.5											32.0
34.0								35.1 m/13.5	13.5	13.5	13.5	13.5											34.0
36.0									37.7 m/13.5	13.5	13.5	13.5											36.0
38.0										40.3 m/13.5	13.5	13.5											38.0
40.0											43.0 m/12.9	13.5											40.0
42.0													43.0 m/12.9										42.0
44.0																							44.0
Reeves	1	1	1	1	1	1	1	1	1	1	1	1	1	1	1	1	1	1	1	1	1	1	Reeves

Working radius (m)	48.8		51.8		54.9		57.9		61.0		Working radius (m)
	12.0	14.0	16.0	18.0	20.0	22.0	24.0	26.0	28.0	30.0	
12.0	13.5	12.5 m/13.5	13.1 m/13.5	13.6 m/13.5							12.0
14.0	13.5	13.5	13.5	13.5	14.1 m/13.5						14.0
16.0	13.5	13.5	13.5	13.5	13.5						16.0
18.0	13.5	13.5	13.5	13.5	13.5						18.0
20.0	13.5	13.5	13.5	13.5	13.5						20.0
22.0	13.5	13.5	13.5	13.5	13.5						22.0
24.0	13.5	13.5	13.5	13.5	13.5						24.0
26.0	13.5	13.5	13.5	13.5	13.5						26.0
28.0	13.5	13.5	13.5	13.5	13.5						28.0
30.0	13.5	13.5	13.5	13.5	13.5						30.0
32.0	13.5	13.5	13.5	13.5	13.5						32.0
34.0	13.5	13.5	13.5	13.5	13.5						34.0
36.0	13.5	13.5	13.5	13.5	13.5						36.0
38.0	13.5	13.5	13.5	13.5	13.5						38.0
40.0	13.5	13.5	13.5	13.5	13.5						40.0
42.0	13.3	13.1	12.9	12.8	12.5						42.0
44.0	12.3	12.1	11.8	11.7	11.5						44.0
46.0	45.6 m/11.5	11.2	10.9	10.8	10.5						46.0
48.0		10.3	10.0	9.9	9.7						48.0
50.0		48.3 m/10.2	9.1	9.2	8.9						50.0
52.0			50.9 m/8.7	8.5	8.2						52.0
54.0				53.5 m/8.0	7.5						54.0
56.0					6.8						56.0
58.0					56.2 m/6.7						58.0
60.0											60.0
62.0											62.0
Reeves	1	1	1	1	1	1	1	1	1	1	Reeves

Note: Ratings according to EN13000.

Ratings shown in   are determined by the strength of the boom or other structural components.

Refer to notes P15.



# Long Boom Lifting Capacity

Unit: metric ton

Counterweight: 90.0 t,  
Carbody weight: 24.0 t

Working radius (m) \ Boom length (m)	64.0	67.1	70.1	73.2	76.2	79.2	82.3	Working radius (m) \ Boom length (m)
12.0	12.8 m/47.1	13.3 m/46.1	13.8 m/45.0					12.0
14.0	45.0	44.9	44.8	14.3 m/44.2	14.9 m/41.1	15.4 m/36.2	15.9 m/32.3	14.0
16.0	42.0	41.9	41.8	41.7	39.6	35.5	32.2	16.0
18.0	39.4	39.3	39.2	39.1	37.2	33.2	30.1	18.0
20.0	37.2	37.1	37.0	36.9	35.1	31.3	28.3	20.0
22.0	35.2	35.1	35.0	34.9	33.3	29.6	26.7	22.0
24.0	33.4	33.3	33.2	33.1	31.7	28.0	25.2	24.0
26.0	31.5	31.3	31.2	30.9	30.2	26.7	24.0	26.0
28.0	28.5	28.3	28.1	27.9	27.8	25.5	22.8	28.0
30.0	25.9	25.7	25.6	25.4	25.3	24.4	21.8	30.0
32.0	23.7	23.5	23.4	23.1	23.0	22.9	20.9	32.0
34.0	21.8	21.6	21.5	21.2	21.1	21.0	20.1	34.0
36.0	20.1	19.9	19.8	19.5	19.4	19.3	19.2	36.0
38.0	18.7	18.4	18.3	18.1	18.0	17.9	17.8	38.0
40.0	17.3	17.1	17.0	16.7	16.6	16.5	16.4	40.0
42.0	16.2	15.9	15.8	15.5	15.4	15.3	15.2	42.0
44.0	15.1	14.8	14.7	14.5	14.4	14.3	14.2	44.0
46.0	14.1	13.9	13.7	13.5	13.4	13.3	13.2	46.0
48.0	13.3	13.0	12.9	12.6	12.5	12.4	12.3	48.0
50.0	12.5	12.2	12.1	11.8	11.7	11.6	11.5	50.0
52.0	11.7	11.5	11.3	11.1	11.0	10.9	10.8	52.0
54.0	11.1	10.8	10.7	10.4	10.3	10.2	10.1	54.0
56.0	10.4	10.2	10.0	9.8	9.7	9.6	9.5	56.0
58.0	56.9 m/10.2	9.6	9.5	9.2	9.1	9.0	8.9	58.0
60.0		59.6 m/9.2	8.9	8.7	8.6	8.5	8.4	60.0
62.0			8.5	8.2	8.1	8.0	7.9	62.0
64.0			62.2 m/8.4	7.7	7.6	7.5	7.4	64.0
66.0				64.9 m/7.6	7.2	7.1	7.0	66.0
68.0					67.5 m/6.9	6.8	6.7	68.0
70.0						6.4	6.3	70.0
72.0						70.2 m/6.3	6.0	72.0
74.0							72.8 m/5.9	74.0
Reeves	4	4	4	4	4	3	3	Reeves

Working radius (m) \ Boom length (m)	85.3	88.4	91.4	Working radius (m) \ Boom length (m)
16.0	16.5 m/27.0	17.0 m/24.9	17.5 m/21.3	16.0
18.0	27.0	24.0	20.9	18.0
20.0	25.3	22.4	19.5	20.0
22.0	23.9	21.1	18.3	22.0
24.0	22.6	19.9	17.3	24.0
26.0	21.4	18.9	16.3	26.0
28.0	20.4	18.0	15.5	28.0
30.0	19.5	17.1	14.8	30.0
32.0	18.6	16.4	14.1	32.0
34.0	17.9	15.7	13.6	34.0
36.0	17.2	15.1	13.0	36.0
38.0	16.6	14.6	12.6	38.0
40.0	16.1	14.1	12.1	40.0
42.0	15.1	13.6	11.7	42.0
44.0	14.1	13.2	11.4	44.0
46.0	13.1	12.8	11.0	46.0
48.0	12.2	12.3	10.7	48.0
50.0	11.4	11.3	10.5	50.0
52.0	10.7	10.6	10.2	52.0
54.0	10.0	9.9	9.8	54.0
56.0	9.4	9.3	9.2	56.0
58.0	8.8	8.7	8.6	58.0
60.0	8.3	8.2	8.1	60.0
62.0	7.8	7.7	7.6	62.0
64.0	7.3	7.2	7.1	64.0
66.0	6.9	6.8	6.7	66.0
68.0	6.6	6.5	6.4	68.0
70.0	6.2	6.1	5.9	70.0
72.0	5.9	5.8	5.7	72.0
74.0	5.6	5.5	5.4	74.0
76.0	75.4 m/5.4	5.3	5.1	76.0
78.0		4.9	4.8	78.0
80.0			4.5	80.0
82.0			80.7 m/4.4	82.0
84.0				84.0
Reeves	2	2	2	Reeves

Note:

Ratings according to EN13000.

Ratings shown in   are determined by the strength of the boom or other structural components.

Refer to notes P18.



# HYDRAULIC CRAWLER CRANE CKE 2500

## Auxiliary Sheave Lifting Capacity for Long Boom (With 35 t Main Hook)

Unit: metric ton

Counterweight: 90.0 t, Carbody weight: 24.0 t

Working radius (m)	64.0		67.1		70.1		73.2		76.2		79.2		82.3		85.3		88.4		91.4		Working radius (m)
	Boom length (m)	Working radius (m)	Boom length (m)	Working radius (m)	Boom length (m)	Working radius (m)	Boom length (m)	Working radius (m)	Boom length (m)	Working radius (m)	Boom length (m)	Working radius (m)	Boom length (m)	Working radius (m)	Boom length (m)	Working radius (m)	Boom length (m)	Working radius (m)	Boom length (m)	Working radius (m)	
12.0	13.5 m/13.5																				12.0
14.0	13.5	13.5	14.5 m/13.5	15.0 m/13.5	15.6 m/13.5																14.0
16.0	13.5	13.5	13.5	13.5	13.5	16.1 m/13.5	16.6 m/13.5	17.2m /13.5	17.7 m/13.5												16.0
18.0	13.5	13.5	13.5	13.5	13.5	13.5	13.5	13.5	13.5	18.2 m/13.5											18.0
20.0	13.5	13.5	13.5	13.5	13.5	13.5	13.5	13.5	13.5	13.5											20.0
22.0	13.5	13.5	13.5	13.5	13.5	13.5	13.5	13.5	13.5	13.5											22.0
24.0	13.5	13.5	13.5	13.5	13.5	13.5	13.5	13.5	13.5	13.5											24.0
26.0	13.5	13.5	13.5	13.5	13.5	13.5	13.5	13.5	13.5	13.5											26.0
28.0	13.5	13.5	13.5	13.5	13.5	13.5	13.5	13.5	13.5	13.5											28.0
30.0	13.5	13.5	13.5	13.5	13.5	13.5	13.5	13.5	13.5	13.5											30.0
32.0	13.5	13.5	13.5	13.5	13.5	13.5	13.5	13.5	13.5	13.5	12.8										32.0
34.0	13.5	13.5	13.5	13.5	13.5	13.5	13.5	13.5	13.5	13.5	12.3										34.0
36.0	13.5	13.5	13.5	13.5	13.5	13.5	13.5	13.5	13.5	13.5	11.7										36.0
38.0	13.5	13.5	13.5	13.5	13.5	13.5	13.5	13.5	13.5	13.5	11.3										38.0
40.0	13.5	13.5	13.5	13.5	13.5	13.5	13.5	13.5	13.5	13.5	10.8										40.0
42.0	13.5	13.5	13.5	13.5	13.5	13.5	13.5	13.5	13.5	13.5	10.4										42.0
44.0	13.5	13.5	13.4	13.2	13.1	13.0	12.9	12.8	11.9	10.1											44.0
46.0	12.8	12.6	12.4	12.2	12.1	12.0	11.9	11.8	11.5	9.7											46.0
48.0	12.0	11.7	11.6	11.3	11.2	11.1	11.0	10.9	11.0	9.4											48.0
50.0	11.2	10.9	10.8	10.5	10.4	10.3	10.2	10.1	10.0	9.2											50.0
52.0	10.4	10.2	10.0	9.8	9.7	9.6	9.5	9.4	9.3	8.9											52.0
54.0	9.8	9.5	9.4	9.1	9.0	8.9	8.8	8.7	8.6	8.5											54.0
56.0	9.1	8.9	8.7	8.5	8.4	8.3	8.2	8.1	8.0	7.9											56.0
58.0	8.4	8.3	8.2	7.9	7.8	7.7	7.6	7.5	7.4	7.3											58.0
60.0		7.7	7.6	7.4	7.3	7.2	7.1	7.0	6.9	6.8											60.0
62.0		60.7 m/7.5	7.2	6.9	6.8	6.7	6.6	6.5	6.4	6.3											62.0
64.0			63.3 m/6.9	6.4	6.3	6.2	6.1	6.0	5.9	5.8											64.0
66.0				5.9	5.9	5.8	5.7	5.6	5.5	5.4											66.0
68.0					5.5	5.5	5.4	5.3	5.2	5.1											68.0
70.0					68.6 m/5.4	5.1	5.0	4.9	4.8	4.6											70.0
72.0						71.3 m/4.8	4.7	4.6	4.5	4.4											72.0
74.0							73.9 m/4.4	4.3	4.2	4.1											74.0
76.0								4.0	4.0	3.8											76.0
78.0								76.5m /3.9	3.8	3.5											78.0
80.0									79.1 m/3.7	3.2											80.0
82.0										81.8 m/2.9											82.0
Reeves	1	1	1	1	1	1	1	1	1	1											Reeves

Note: Ratings according to EN13000.

Ratings shown in   are determined by the strength of the boom or other structural components.

Refer to notes P18.



# Fixed Jib Lifting Capacities (Without Main Hook)

Unit: metric ton

Jib Offset Angle: 10°

Counterweight: 90.0 t, Carbody weight: 24.0 t

Boom length (m)		27.4				36.6				45.7				54.9				Boom length (m)
Jib length (m)		12.2	18.3	24.4	30.5	12.2	18.3	24.4	30.5	12.2	18.3	24.4	30.5	12.2	18.3	24.4	30.5	Jib length (m)
Working radius (m)	10.0	10.4 m/27.0																10.0
	12.0	25.5	12.5 m/21.2			26.6				13.6 m/26.5								12.0
	14.0	24.3	20.4	14.6 m/12.1		25.5	14.1 m/21.2			26.3	15.7 m/21.2			15.2 m/26.4				14.0
	16.0	23.0	19.3	11.8	16.7 m/6.8	24.5	20.3	16.2 m/12.1		25.4	21.0	17.8 m/12.1		26.2	17.3 m/21.1			16.0
	18.0	21.8	18.4	11.2	6.5	23.6	19.4	11.7	18.3 m/6.8	24.6	20.2	12.1	19.9 m/6.7	25.4	20.9	19.4 m/12.1		18.0
	20.0	20.7	17.5	10.7	6.2	22.7	18.6	11.2	6.5	23.8	19.5	11.6	6.7	24.7	20.2	12.0	21.5 m/6.8	20.0
	22.0	19.8	16.8	10.3	5.9	21.9	17.9	10.8	6.2	23.0	18.8	11.3	6.4	23.9	19.5	11.6	6.7	22.0
	24.0	18.9	16.1	9.9	5.6	21.2	17.2	10.4	5.9	22.2	18.1	10.9	6.2	23.2	18.9	11.3	6.4	24.0
	26.0	18.1	15.4	9.4	5.3	20.5	16.6	10.1	5.7	21.5	17.5	10.5	5.9	22.5	18.3	10.9	6.2	26.0
	28.0	17.3	14.3	9.1	5.1	19.8	16.1	9.7	5.4	20.7	17.0	10.2	5.7	21.9	17.8	10.6	6.0	28.0
	30.0	16.7	13.4	8.7	4.9	19.1	15.5	9.4	5.2	20.0	16.5	9.9	5.5	21.3	17.3	10.3	5.8	30.0
	34.0	15.5	11.9	8.1	4.5	17.8	13.8	8.7	4.8	18.6	15.6	9.3	5.1	20.1	16.4	9.8	5.4	34.0
	38.0	37.1 m/14.5	10.7	7.6	4.2	16.4	12.4	8.2	4.5	17.1	14.0	8.8	4.8	17.4	15.6	9.2	5.1	38.0
	42.0		9.8	7.1	3.9	15.3	11.3	7.7	4.2	15.5	12.8	8.3	4.5	14.9	14.2	8.8	4.8	42.0
	46.0		42.9 m/9.7	6.8	3.7	45.1 m/14.4	10.5	7.3	4.0	13.6	11.8	7.9	4.2	12.8	13.1	8.3	4.5	46.0
	50.0			48.6 m/6.6	3.5		9.8	7.0	3.8	11.9	11.0	7.5	4.0	11.1	11.6	8.0	4.3	50.0
	54.0				3.2		50.8 m/9.6	6.7	3.6	53.0 m/10.9	10.3	7.2	3.8	9.7	10.1	7.6	4.1	54.0
	58.0				54.3 m/3.1			56.5 m/6.5	3.4		9.7	6.9	3.7	8.5	8.9	7.3	3.9	58.0
	62.0								3.2		58.7 m/9.6	6.7	3.5	60.9 m/7.8	7.8	7.1	3.7	62.0
	66.0								62.3 m/3.1			64.4 m/6.5	3.4		6.9	6.8	3.6	66.0
70.0												3.1		66.6 m/6.8	6.5	3.5	70.0	
74.0													70.2 m/3.1		72.4 m/6.1	3.4	74.0	
78.0																3.2	78.0	
82.0																78.1 m/3.2	82.0	
Reeves	2	2	1	1	2	2	1	1	2	2	1	1	2	2	1	1	Reeves	

Boom length (m)		64.0				73.2				76.2				Boom length (m)
Jib length (m)		12.2	18.3	24.4	30.5	12.2	18.3	24.4	30.5	12.2	18.3	24.4	30.5	Jib length (m)
Working radius (m)	16.0	16.8 m/26.5												16.0
	18.0	26.0	18.9 m/21.1			18.4 m/26.4				18.9 m/26.4				18.0
	20.0	25.3	20.7	21.0 m/12.1		25.9	20.5 m/21.1			26.1	21.0 m/21.1			20.0
	22.0	24.7	20.1	11.9	23.0 m/6.7	25.3	20.6	22.5 m/12.1		25.5	20.8	23.1 m/12.0		22.0
	24.0	24.1	19.5	11.6	6.6	24.7	20.0	11.8	24.6 m/6.7	24.9	20.2	11.9	25.2 m/6.7	24.0
	26.0	23.5	19.0	11.3	6.4	24.2	19.5	11.5	6.5	24.4	19.7	11.6	6.6	26.0
	28.0	23.0	18.4	11.0	6.2	23.7	19.0	11.2	6.3	23.9	19.2	11.3	6.4	28.0
	30.0	22.4	18.0	10.7	6.0	22.6	18.5	11.0	6.2	21.7	18.7	11.1	6.2	30.0
	34.0	19.8	17.1	10.2	5.6	18.9	17.7	10.5	5.8	18.3	17.9	10.6	5.9	34.0
	38.0	16.6	16.3	9.7	5.3	15.8	16.3	10.0	5.5	15.5	15.9	10.1	5.6	38.0
	42.0	14.1	14.5	9.2	5.0	13.3	13.8	9.6	5.2	13.0	13.5	9.7	5.3	42.0
	46.0	12.0	12.5	8.8	4.7	11.2	11.7	9.2	4.9	10.9	11.4	9.3	5.0	46.0
	50.0	10.3	10.7	8.4	4.5	9.5	10.0	8.8	4.7	9.2	9.7	8.9	4.8	50.0
	54.0	8.9	9.3	8.0	4.3	8.1	8.5	8.4	4.5	7.8	8.2	8.5	4.5	54.0
	58.0	7.7	8.1	7.7	4.1	6.9	7.3	7.8	4.3	6.5	7.0	7.6	4.4	58.0
	62.0	6.6	7.0	7.5	3.9	5.8	6.2	6.8	4.1	5.5	5.9	6.5	4.2	62.0
	66.0	5.7	6.1	6.6	3.8	4.9	5.3	5.8	4.0	4.6	5.0	5.5	4.0	66.0
	70.0	68.8 m/5.1	5.3	5.7	3.6	4.1	4.5	5.0	3.8	3.7	4.1	4.7	3.9	70.0
	74.0		4.6	5.0	3.5	3.4	3.7	4.3	3.7	3.0	3.4	4.0	3.7	74.0
	78.0		74.6 m/4.5	4.3	3.4	76.7 m/2.9	3.1	3.6	3.6	2.4	2.8	3.3	3.5	78.0
82.0			80.3 m/4.0	3.4		2.5	3.0	3.3	79.4 m/2.2	2.2	2.7	3.0	82.0	
86.0				3.2		82.5 m/2.5	2.5	2.7		85.1 m/1.8	2.2	2.5	86.0	
90.0							88.2 m/2.2	2.1			1.7	2.0	90.0	
94.0								93.9 m/1.8			90.8 m/1.5	1.6	94.0	
98.0											96.6 m/1.3		98.0	
Reeves	2	2	1	1	2	2	1	1	2	2	1	1	Reeves	

Note: Ratings according to EN13000.  
 Ratings shown in   are determined by the strength of the boom or other structural components.  
 Refer to notes P21.  
 One part of line on hook is not allowed to use for 12.2 m jib length with offset angle 10 degrees.



# Jib Offset Angle: 30°

Counterweight: 90.0 t, Carbody weight: 24.0 t

Boom length (m)		27.4				36.6				45.7				54.9				Boom length (m)
Jib length (m)		12.2	18.3	24.4	30.5	12.2	18.3	24.4	30.5	12.2	18.3	24.4	30.5	12.2	18.3	24.4	30.5	Jib length (m)
Working radius (m)	14.0	14.1 m/19.3				15.7 m/19.3												14.0
	16.0	18.7				19.2				17.3 m/19.2								16.0
	18.0	17.9	13.5			18.7	19.6 m/13.5			19.1				18.9 m/19.2				18.0
	20.0	16.8	13.5	21.9 m/8.2		18.1	13.5			18.7	21.2 m/13.5			19.0				20.0
	22.0	15.9	13.1	8.2		17.2	13.5	23.5 m/8.1		18.2	13.5			18.6	22.8 m/13.5			22.0
	24.0	15.2	12.6	7.9	25.9 m/4.4	16.4	13.1	8.1		17.4	13.4	25.1 m/8.1		18.2	13.5			24.0
	26.0	14.5	12.0	7.6	4.4	15.7	12.8	7.9	27.5 m/4.3	16.7	13.2	8.0		17.6	13.4	26.7 m/8.1		26.0
	28.0	13.9	11.4	7.4	4.2	15.1	12.3	7.6	4.3	16.1	12.9	7.8	29.0 m/4.4	17.0	13.2	8.0		28.0
	30.0	13.4	10.9	7.2	4.1	14.6	11.8	7.4	4.2	15.6	12.5	7.6	4.3	16.4	12.9	7.8	30.6 m/4.3	30.0
	34.0	12.7	10.0	6.8	3.8	13.7	10.9	7.1	4.0	14.6	11.6	7.3	4.1	15.5	12.2	7.5	4.2	34.0
	38.0	37.9 m/12.4	9.4	6.5	3.7	13.0	10.2	6.8	3.8	13.9	10.9	7.0	3.9	14.7	11.5	7.2	4.0	38.0
	42.0		9.0	6.2	3.5	12.6	9.6	6.5	3.6	13.3	10.3	6.7	3.7	14.0	10.9	6.9	3.8	42.0
	46.0		44.0 m/8.9	6.1	3.3	45.8 m/12.4	9.2	6.3	3.5	12.8	9.8	6.5	3.6	13.2	10.4	6.7	3.7	46.0
	50.0			6.1	3.3		8.9	6.1	3.4	12.1	9.4	6.3	3.5	11.4	9.9	6.5	3.6	50.0
	54.0			50.1 m/6.1	3.0		51.9 m/8.9	6.1	3.3	53.7 m/10.7	9.1	6.2	3.4	9.9	9.5	6.4	3.5	54.0
	58.0				56.2 m/2.8			6.1	3.1		8.9	6.1	3.3	8.6	9.2	6.2	3.4	58.0
	62.0								2.9		59.8 m/8.9	6.1	3.3	61.6 m/7.6	8.2	6.1	3.3	62.0
	66.0								64.1 m/2.8			65.9 m/6.1	3.1		7.2	6.0	3.2	66.0
	70.0												2.9		67.7 m/6.8	6.0	3.2	70.0
	74.0													72.0 m/2.8		73.8 m/6.0	3.1	74.0
78.0																2.9	78.0	
82.0																79.9 m/2.8	82.0	
Reeves	2	1	1	1	2	1	1	1	2	1	1	1	2	1	1	1	Reeves	

Boom length (m)		64.0				73.2				76.2				Boom length (m)
Jib length (m)		12.2	18.3	24.4	30.5	12.2	18.3	24.4	30.5	12.2	18.3	24.4	30.5	Jib length (m)
Working radius (m)	20.0	20.5 m/19.2												20.0
	22.0	18.9				19.1				22.6 m/19.1				22.0
	24.0	18.6	24.4 m/13.5			18.8				18.9				24.0
	26.0	18.3	13.5			18.6	13.5			18.7	26.5 m/13.5			26.0
	28.0	17.7	13.4	28.3 m/8.1		18.3	13.5	29.9 m/8.1		18.4	13.5			28.0
	30.0	17.2	13.2	7.9	32.2 m/4.3	17.8	13.4	8.0	33.8 m/4.3	18.0	13.4	30.4 m/8.0		30.0
	34.0	16.2	12.8	7.6	4.2	16.8	13.0	7.8	4.3	17.0	13.1	7.8	34.3 m/4.3	34.0
	38.0	15.4	12.0	7.4	4.1	16.0	12.5	7.5	4.1	16.2	12.7	7.5	4.2	38.0
	42.0	14.6	11.4	7.1	3.9	13.9	11.9	7.3	4.0	13.6	12.0	7.3	4.0	42.0
	46.0	12.4	10.9	6.9	3.8	11.7	11.3	7.1	3.8	11.5	11.5	7.1	3.9	46.0
	50.0	10.7	10.4	6.7	3.7	10.0	10.9	6.9	3.7	9.7	10.6	6.9	3.8	50.0
	54.0	9.2	10.0	6.5	3.6	8.5	9.3	6.7	3.6	8.2	9.1	6.7	3.7	54.0
	58.0	7.9	8.7	6.4	3.4	7.2	8.0	6.5	3.5	6.9	7.7	6.6	3.5	58.0
	62.0	6.8	7.5	6.3	3.4	6.1	6.9	6.4	3.4	5.8	6.6	6.4	3.5	62.0
	66.0	5.8	6.5	6.1	3.3	5.1	5.8	6.3	3.4	4.8	5.6	6.1	3.4	66.0
	70.0	69.6 m/5.1	5.6	6.1	3.3	4.2	5.0	5.5	3.3	3.9	4.7	5.2	3.3	70.0
	74.0		4.8	5.3	3.2	3.4	4.2	4.7	3.3	3.2	3.9	4.4	3.3	74.0
	78.0		75.7 m/4.5	4.6	3.2	77.5 m/2.9	3.4	3.9	3.2	2.5	3.2	3.7	3.2	78.0
	82.0			81.8 m/3.9	3.0		2.8	3.3	3.2	80.1 m/2.2	2.5	3.0	3.2	82.0
	86.0				2.9		83.6 m/2.5	2.7	2.9		1.9	2.4	2.8	86.0
90.0				87.8 m/2.8			89.7 m/2.1	2.5		86.2 m/1.9	1.8	2.3	90.0	
94.0								2.0			92.3 m/1.5	1.8	94.0	
98.0								95.8 m/1.7				1.4	98.0	
100.0												98.4 m/1.3	100.0	
Reeves	2	1	1	1	2	1	1	1	2	1	1	1	Reeves	

Note: Ratings according to EN13000. Ratings shown in   are determined by the strength of the boom or other structural components. Refer to notes P21.



# Luffing Jib Lifting Capacities (Without Main Hook)

Unit: metric ton

Counterweight: 90.0 t, Carbody weight: 24.0 t

21.3 m Boom Length	21.3																	Boom length (m)
	21.3				27.4				33.5				39.6				Jib length (m)	
	88°	83°	68°	63°	88°	83°	68°	63°	88°	83°	68°	63°	88°	83°	68°	63°	Boom angle	
9.8	80.0																9.8	
10.0	79.3																10.0	
12.0	72.2				70.0												12.0	
14.0	65.1	65.7			64.7				54.0								14.0	
16.0	58.0	58.7			58.6	58.6			51.9				39.5				16.0	
18.0	50.9	54.2			52.9	53.5			49.2	52.5			38.7				18.0	
20.0	43.8	47.6			47.2	47.5			46.5	47.3			37.6	38.7			20.0	
22.0	36.7	42.1			41.5	42.0			42.0	41.9			36.3	38.1			22.0	
24.0	27.9	37.8	35.6		36.9	37.7			37.4	37.5			34.8	36.5			24.0	
26.0			32.2		31.7	34.1			33.6	34.0			33.1	33.8			26.0	
28.0			29.4	28.8	26.6	31.1	29.1		30.4	31.0			31.0	30.8			28.0	
30.0			27.0	26.5		27.8	26.7	32.0 m/24.2	27.3	28.4	32.0 m/24.4	36.0 m/20.7	28.2	28.3			30.0	
34.0				32.0 m/24.4			22.8	22.4	20.4	24.3	22.6	19.3	23.8	24.2	36.0 m/21.0		34.0	
38.0								36.0 m/21.3	19.5		36.0 m/21.5	19.7	17.0	18.9	21.1	19.6	40.0 m/17.9	38.0
42.0												17.4	44.0 m/16.0	40.0 m/16.4	17.2	17.2	16.8	42.0
46.0																15.4	15.0	46.0
50.0																48.0 m/14.5	13.4	50.0
Reeves		6				6				4				3				Reeves

27.4 m Boom Length	21.3																	Boom length (m)
	45.7				51.8				57.9				61.0				Jib length (m)	
	88°	83°	68°	63°	88°	83°	68°	63°	88°	83°	68°	63°	88°	83°	68°	63°	Boom angle	
16.0	29.4																16.0	
18.0	28.7				26.6												18.0	
20.0	28.1				26.0				20.9				18.4				20.0	
22.0	27.5	28.1			24.9				20.4				18.3				22.0	
24.0	27.0	27.5			23.8	24.3			19.5				17.6				24.0	
26.0	26.5	27.0			22.7	23.2			18.5	19.2			16.7				26.0	
28.0	25.9	26.6			21.6	22.1			17.5	18.2			15.8	16.4			28.0	
30.0	24.7	25.9			20.4	21.1			16.6	17.2			15.0	15.6			30.0	
34.0	22.4	23.5			18.2	18.9			15.0	15.5			13.6	14.0			34.0	
38.0	20.3	20.9	19.4		16.3	17.0			13.5	14.0			12.3	12.7			38.0	
42.0	16.9	18.4	17.0		14.3	15.0	16.8		12.3	12.7			11.2	11.6			42.0	
46.0	13.3	15.8	15.1	44.0 m/15.6	12.5	13.2	14.9	48.0 m/13.7	11.2	11.6	12.8		10.3	10.6	48.0 m/11.2		46.0	
50.0		48.0 m/14.0	13.6	14.8	10.7	11.5	13.3	12.9	10.2	10.6	11.7	52.0 m/11.6	9.4	9.7	10.7		50.0	
54.0			12.3	13.2	52.0 m/9.7	9.7	11.9	11.7	9.3	9.7	10.8	11.1	8.6	9.0	9.9	10.1	54.0	
58.0				12.0			10.3	10.6	8.2	8.9	9.9	10.2	7.9	8.2	9.1	9.4	58.0	
62.0				56.0 m/11.4				60.0 m/9.5	9.3		60.0 m/8.2	9.1	9.4	7.0	7.5	8.4	8.7	62.0
66.0												8.0	8.6		64.0 m/7.0	7.8	8.0	66.0
70.0															68.0 m/7.5	7.4		70.0
Reeves		3				2				2				2				Reeves

27.4 m Boom Length	27.4																	Boom length (m)
	21.3				27.4				33.5				39.6				Jib length (m)	
	88°	83°	68°	63°	88°	83°	68°	63°	88°	83°	68°	63°	88°	83°	68°	63°	Boom angle	
10.0	73.4																10.0	
12.0	67.6				67.5												12.0	
14.0	61.7	65.4			62.4				54.0								14.0	
16.0	55.9	58.4			57.3	58.3			52.1				39.5				16.0	
18.0	50.1	53.9			52.2	53.2			49.4	52.2			38.6				18.0	
20.0	44.2	47.3			47.1	47.2			46.8	47.0			37.5				20.0	
22.0	38.4	41.9			42.0	41.7			42.6	41.6			36.3	38.3			22.0	
24.0	29.7	37.5			37.2	37.4			37.8	37.3			34.8	37.0			24.0	
26.0		33.5	31.4		32.8	33.8			33.9	33.7			33.2	33.6			26.0	
28.0			28.6		27.7	30.8			30.6	30.7			31.3	30.6			28.0	
30.0			26.2	25.5	22.3	28.3	25.9		27.8	28.2			28.5	28.1			30.0	
34.0			32.0 m/24.2	21.8		32.0 m/25.1	22.1	21.5	21.2	24.1	21.9		23.9	24.0			34.0	
38.0							19.2	18.7	36.0 m/17.6	19.7	19.0	18.5	19.5	20.9	18.9		38.0	
42.0								40.0 m/17.6			16.8	16.3	40.0 m/17.1	18.4	16.7	16.1	42.0	
46.0											44.0 m/15.8	14.5		44.0 m/15.9	14.8	14.3	46.0	
50.0															13.3	12.8	50.0	
54.0																52.0 m/12.2	54.0	
Reeves		6				5				4				3			Reeves	

Note: Ratings according to EN13000.

Ratings shown in   are determined by the strength of the boom or other structural components. Refer to notes P25 and P26.

# HYDRAULIC CRAWLER CRANE CKE25500

Unit: metric ton

**Counterweight: 90.0 t, Carbody weight: 24.0 t**

27.4 m Boom Length	Boom length (m)	27.4																Boom length (m)
	Jib length (m)	45.7				51.8				57.9				61.0				Jib length (m)
	Boom angle	88°	83°	68°	63°	88°	83°	68°	63°	88°	83°	68°	63°	88°	83°	68°	63°	Boom angle
Working Radius (m)	18.0	28.7				25.7												18.0
	20.0	28.1				25.4				20.4								20.0
	22.0	27.5				24.5				20.1				18.1				22.0
	24.0	27.0	27.7			23.5				19.3				17.4				24.0
	26.0	26.5	27.2			22.4	22.8			18.4				16.6				26.0
	28.0	25.9	26.7			21.3	21.7			17.4	18.1			15.7	16.3			28.0
	30.0	24.7	26.2			20.2	20.7			16.5	17.1			14.9	15.5			30.0
	34.0	22.4	23.8			18.1	18.7			14.9	15.4			13.5	14.0			34.0
	38.0	20.4	20.7	40.0 m/17.5		16.2	16.8			13.5	14.0			12.2	12.7			38.0
	42.0	17.5	18.2	16.4		14.3	14.9	44.0 m/15.2		12.3	12.7			11.2	11.5			42.0
	46.0	13.8	16.2	14.6	14.1	12.5	13.2	14.3		11.2	11.6	48.0 m/12.2		10.2	10.6			46.0
	50.0		13.0	13.1	12.6	10.8	11.6	12.8	12.3	10.3	10.6	11.7		9.4	9.7	10.6		50.0
	54.0			11.8	11.4	52.0 m/10.0	9.9	11.5	11.1	9.4	9.8	10.7	10.8	8.6	8.9	9.8	56.0 m/9.7	54.0
	58.0			56.0 m/11.3	10.3		56.0 m/9.1	10.4	10.0	8.4	9.0	9.9	9.8	8.0	8.3	9.0	9.3	58.0
	62.0							9.0	9.1		7.6	9.1	8.9	7.3	7.6	8.4	8.6	62.0
	66.0								64.0 m/8.7			8.1	8.1		64.0 m/7.3	7.8	8.0	66.0
	70.0											68.0 m/7.5	7.4			7.1	7.3	70.0
74.0															72.0 m/6.5	6.5	74.0	
Reeves			3				2			2				2			Reeves	

33.5 m Boom Length	Boom length (m)	33.5																Boom length (m)
	Jib length (m)	21.3				27.4				33.5				39.6				Jib length (m)
	Boom angle	88°	83°	68°	63°	88°	83°	68°	63°	88°	83°	68°	63°	88°	83°	68°	63°	Boom angle
Working Radius (m)	10.0	67.5																10.0
	12.0	65.3				63.5												12.0
	14.0	60.2				59.3				52.2								14.0
	16.0	55.1	58.1			55.1				50.9				39.5				16.0
	18.0	49.9	53.6			50.9	52.9			48.3				38.7				18.0
	20.0	44.8	47.0			46.7	46.9			45.6	46.5			37.5				20.0
	22.0	39.7	41.7			42.5	41.5			42.7	41.3			36.4	38.5			22.0
	24.0	31.2	37.3			37.6	37.2			38.2	37.0			34.9	36.8			24.0
	26.0		33.7			33.6	33.6			34.2	33.4			33.2	33.3			26.0
	28.0			27.7		28.5	30.7			30.8	30.5			31.5	30.3			28.0
	30.0			25.4		23.3	28.1	32.0 m/23.0		28.0	27.9			28.7	27.8			30.0
	34.0			21.7	21.0		32.0 m/26.0	21.3		21.8	23.9	36.0 m/19.6		24.1	23.8			34.0
	38.0			36.0 m/20.2	18.3			18.5	18.0	36.0 m/18.3	20.8	18.3		20.0	20.7	40.0 m/17.1		38.0
	42.0							40.0 m/17.4	15.9			16.1	15.6	14.9	18.2	16.0	44.0 m/14.4	42.0
	46.0								44.0 m/14.9			14.3	13.8		44.0 m/17.1	14.3	13.6	46.0
	50.0												12.4			12.8	12.2	50.0
	54.0															52.0 m/12.1	11.0	54.0
58.0																56.0 m/10.5	58.0	
Reeves			5				5			4				3			Reeves	

27.4 m Boom Length	Boom length (m)	33.5																Boom length (m)	
	Jib length (m)	45.7				51.8				57.9				61.0				Jib length (m)	
	Boom angle	88°	83°	68°	63°	88°	83°	68°	63°	88°	83°	68°	63°	88°	83°	68°	63°	Boom angle	
Working Radius (m)	18.0	28.8				24.7												18.0	
	20.0	28.1				24.4				19.8								20.0	
	22.0	27.6				24.1				19.5				17.5				22.0	
	24.0	27.0	27.9			23.2				19.2				17.3				24.0	
	26.0	26.6	27.3			22.1	22.5			18.3				16.4				26.0	
	28.0	25.9	26.8			21.1	21.4			17.3	18.0			15.6				28.0	
	30.0	24.7	26.4			20.0	20.4			16.4	17.1			14.8	15.4			30.0	
	34.0	22.4	23.6			18.0	18.4			14.8	15.4			13.4	13.9			34.0	
	38.0	20.4	20.5			16.1	16.6			13.4	13.9			12.1	12.6			38.0	
	42.0	17.8	18.0	44.0 m/14.9		14.3	14.8			12.2	12.6			11.1	11.5			42.0	
	46.0	14.2	16.1	14.0	48.0 m/12.6	12.5	13.2	13.7		11.2	11.6			10.2	10.5			46.0	
	50.0		48.0 m/12.2	13.9	12.5	12.0	10.9	11.6	12.3	52.0 m/11.0	10.2	10.6	11.6		9.4	9.7	52.0 m/10.1	50.0	
	54.0			11.3	10.8	52.0 m/10.1	10.0	11.0	10.5	9.4	9.8	10.7	56.0 m/9.7	8.6	8.9	9.7		54.0	
	58.0			10.3	9.8		56.0 m/9.2	10.0	9.4	8.5	9.0	9.7	9.2	8.0	8.2	9.0	9.1	58.0	
	62.0				8.9				9.0	8.6		7.8	8.8	8.3	7.3	7.6	8.3	8.2	62.0
	66.0								64.0 m/8.4	7.8			8.0	7.6		64.0 m/7.3	7.7	7.5	66.0
	70.0									68.0 m/7.5				7.0	6.9			7.0	70.0
74.0																6.0	6.2	74.0	
78.0																	76.0 m/5.9	78.0	
Reeves			3				2			2				2				Reeves	

Note: Ratings according to EN13000.

Ratings shown in   are determined by the strength of the boom or other structural components.

Refer to notes P25 and P26.

Counterweight: 90.0 t, Carbody weight: 24.0 t

39.6 m Boom Length	39.6																	Boom length (m)
	Jib length (m)																Jib length (m)	
	Boom angle	21.3				27.4				33.5				39.6				Boom angle
	88°	83°	68°	63°	88°	83°	68°	63°	88°	83°	68°	63°	88°	83°	68°	63°		
10.0	64.5																10.0	
12.0	60.6				54.0												12.0	
14.0	56.6				54.0				48.5								14.0	
16.0	52.7	57.7			53.0				48.1				37.4				16.0	
18.0	48.8	53.2			49.5	52.5			47.1				37.0				18.0	
20.0	44.8	46.6			46.1	46.5			44.8	46.1			36.6				20.0	
22.0	40.9	41.3			42.7	41.2			42.6	40.9			36.2	37.1			22.0	
24.0	32.4	37.0			38.0	36.9			38.2	36.6			35.0	36.5			24.0	
26.0		33.4			33.9	33.3			34.5	33.1			33.3	33.0			26.0	
28.0		30.4			29.2	30.4			31.1	30.2			31.5	30.0			28.0	
30.0			32.0 m/22.5		24.0	27.9			28.2	27.7			28.9	27.5			30.0	
34.0			20.9	36.0 m/18.6		23.8	20.4		22.3	23.6			24.2	23.5			34.0	
38.0			18.1	17.4			17.7	40.0 m/16.0	36.0 m/18.8	20.6	17.5		20.4	20.5			38.0	
42.0				40.0 m/16.3			15.6	15.0			15.4	44.0 m/13.8	15.4	18.0	15.3		42.0	
46.0							44.0 m/14.7	13.4			13.7	13.0		44.0 m/17.0	13.6	48.0 m/12.1	46.0	
50.0											12.3	11.7			12.2	11.5	50.0	
54.0												52.0 m/11.1			11.0	10.3	54.0	
58.0																9.4	58.0	
Reeves			5				4				4				3		Reeves	

45.7 m Boom Length	39.6																	Boom length (m)
	Jib length (m)																Jib length (m)	
	Boom angle	45.7				51.8				57.9				61.0				Boom angle
	88°	83°	68°	63°	88°	83°	68°	63°	88°	83°	68°	63°	88°	83°	68°	63°		
18.0	28.8																18.0	
20.0	28.2				23.4				19.0								20.0	
22.0	27.6				23.2				18.7				16.9				22.0	
24.0	27.0	28.0			22.9				18.4				16.7				24.0	
26.0	26.6	27.5			21.9	22.1			18.1				16.3				26.0	
28.0	25.9	27.0			20.8	21.1			17.2				15.5				28.0	
30.0	24.7	26.5			19.8	20.1			16.3	17.0			14.7	15.4			30.0	
34.0	22.5	23.3			17.8	18.2			14.7	15.3			13.3	13.8			34.0	
38.0	20.4	20.3			15.9	16.4			13.3	13.8			12.1	12.5			38.0	
42.0	17.9	17.8			14.1	14.6			12.1	12.6			11.0	11.4			42.0	
46.0	14.5	15.9	13.3		12.5	13.0	48.0 m/12.3		11.1	11.5			10.1	10.4			46.0	
50.0	48.0 m/12.5	14.2	11.9	52.0 m/10.6	10.9	11.5	11.6		10.2	10.5	52.0 m/10.8		9.3	9.6			50.0	
54.0			10.7	10.1	9.2	10.0	10.4	56.0 m/9.3	9.4	9.7	10.2		8.6	8.9	9.6		54.0	
58.0			9.7	9.1		56.0 m/9.3	9.4	8.8	8.4	8.9	9.2	60.0 m/8.1	7.9	8.2	8.9		58.0	
62.0			60.0 m/9.3	8.3			8.6	8.0	60.0 m/7.7	7.7	8.3	7.7	6.7	7.6	8.2	7.6	62.0	
66.0				64.0 m/7.9			7.8	7.2			7.6	7.0		6.7	7.4	6.8	66.0	
70.0								6.6			6.9	6.3			6.8	6.2	70.0	
74.0											72.0 m/6.4	5.7			5.9	5.6	74.0	
78.0												76.0 m/5.5			76.0 m/5.4	5.1	78.0	
Reeves			3				2				2				2		Reeves	

45.7 m Boom Length	45.7																	Boom length (m)
	Jib length (m)																Jib length (m)	
	Boom angle	21.3				27.4				33.5				39.6				Boom angle
	88°	83°	68°	63°	88°	83°	68°	63°	88°	83°	68°	63°	88°	83°	68°	63°		
12.0	54.0				49.0												12.0	
14.0	54.0				47.5				40.5								14.0	
16.0	53.0	54.0			46.0				40.5				35.2				16.0	
18.0	49.3	52.8			44.6				40.5				34.9				18.0	
20.0	45.4	46.2			43.1	45.7			40.5				34.6				20.0	
22.0	41.9	40.9			41.6	40.7			38.5	40.3			33.8				22.0	
24.0	33.4	36.6			38.2	36.5			36.4	36.4			32.6	35.0			24.0	
26.0		33.1			34.2	33.0			34.4	32.9			31.3	32.6			26.0	
28.0		30.1			29.8	30.1			31.3	30.0			30.1	29.6			28.0	
30.0					24.7	27.6			28.4	27.5			28.8	27.2			30.0	
34.0						23.6			22.7	23.5			24.4	23.3			34.0	
38.0									36.0 m/19.3	20.4	40.0 m/15.6		20.7	20.2			38.0	
42.0											40.0 m/19.1	14.6		15.7	17.8	44.0 m/13.7	42.0	
46.0												13.0	12.3		15.8	12.9	46.0	
50.0												11.6	11.0			11.5	50.0	
54.0												52.0 m/11.0	9.9			10.4	54.0	
58.0													56.0 m/9.5			9.4	58.0	
62.0																60.0 m/8.3	62.0	
Reeves			4				4				3				3		Reeves	

Note: Ratings according to EN13000.

Ratings shown in   are determined by the strength of the boom or other structural components. Refer to notes P25 and P26.

# HYDRAULIC CRAWLER CRANE CKE2500

Unit: metric ton

**Counterweight: 90.0 t, Carbody weight: 24.0 t**

45.7 m Boom Length	45.7																	Boom length (m)
	45.7				51.8				57.9				61.0				Jib length (m)	
	Boom angle	88°	83°	68°	63°	88°	83°	68°	63°	88°	83°	68°	63°	88°	83°	68°	63°	Boom angle
Working Radius (m)	18.0	28.1																18.0
	20.0	27.8			22.4				18.3									20.0
	22.0	27.5			22.1				18.0				16.3					22.0
	24.0	27.1			21.8				17.7				16.1					24.0
	26.0	26.6	27.6		21.5				17.4				15.9					26.0
	28.0	26.0	27.1		20.6	20.8			17.1				15.4					28.0
	30.0	24.7	26.6		19.6	19.8			16.2	17.0			14.6	15.3				30.0
	34.0	22.5	23.0		17.6	17.9			14.6	15.3			13.2	13.8				34.0
	38.0	20.4	20.0		15.8	16.1			13.2	13.8			12.0	12.5				38.0
	42.0	18.0	17.6		14.0	14.5			12.1	12.5			10.9	11.4				42.0
	46.0	14.7	15.6	48.0 m/11.9	12.4	12.9			11.0	11.4			10.0	10.4				46.0
	50.0	48.0 m/12.8	14.0	11.3	10.8	11.4	52.0 m/10.4		10.1	10.5			9.2	9.5				50.0
	54.0		52.0 m/13.3	10.1	9.3	9.2	10.0	9.8	9.3	9.7	9.6		8.5	8.8	56.0 m/8.9			54.0
	58.0			9.2	8.4		8.5	8.9	8.1	8.4	8.8	8.6	7.5	8.1	8.5			58.0
	62.0			8.3	7.7			8.0	7.3	60.0 m/7.7	7.7	7.8	7.0	5.6	7.5	7.7	64.0 m/6.4	62.0
	66.0			64.0 m/8.0	7.0			7.3	6.6		64.0 m/7.0	7.1	6.3		6.6	6.9	6.1	66.0
	70.0							6.6	5.9			6.4	5.6			6.2	5.5	70.0
	74.0								72.0 m/5.6			5.8	5.1			5.6	4.9	74.0
	78.0												4.6			4.8	4.4	78.0
	82.0																4.0	82.0
Reeves			3				2				2				2			Reeves

51.8 m Boom Length	51.8																	Boom length (m)
	21.3				27.4				33.5				39.6				Jib length (m)	
	Boom angle	88°	83°	68°	63°	88°	83°	68°	63°	88°	83°	68°	63°	88°	83°	68°	63°	Boom angle
Working Radius (m)	12.0	54.0			40.5													12.0
	14.0	52.4			40.5				40.5									14.0
	16.0	47.1			40.5				40.5				32.7					16.0
	18.0	42.6	51.8		40.5				40.5				32.3					18.0
	20.0	38.8	45.8		39.1	40.5			38.7				31.9					20.0
	22.0	35.5	40.6		35.8	40.3			35.6	39.8			31.5					22.0
	24.0	32.5	36.3		33.0	36.1			32.9	35.9			31.1	32.7				24.0
	26.0		32.9		30.5	32.6			30.6	32.5			30.2	32.2				26.0
	28.0		29.9		28.3	29.7			28.4	29.6			28.1	29.3				28.0
	30.0				25.5	27.2			26.5	27.1			26.3	26.9				30.0
	34.0			36.0 m/17.7		23.3			23.2	23.2			23.2	23.0				34.0
	38.0			16.5			40.0 m/15.1		36.0 m/19.9	20.2			20.6	19.9				38.0
	42.0			14.5	13.6		14.1		40.0 m/18.9	13.9			16.1	17.5				42.0
	46.0				12.0		12.5	11.6			12.3			15.6	12.1			46.0
	50.0						48.0 m/11.9	10.4			11.0	10.2			10.8			50.0
	54.0							52.0 m/9.9			9.9	9.2			9.7	8.8		54.0
	58.0											8.3			8.8	7.9		58.0
	62.0														60.0 m/8.4	7.2		62.0
	66.0															64.0 m/6.8		66.0
Reeves			4				3			3				3				Reeves

51.8 m Boom Length	51.8																	Boom length (m)
	45.7				51.8				57.9				61.0				Jib length (m)	
	Boom angle	88°	83°	68°	63°	88°	83°	68°	63°	88°	83°	68°	63°	88°	83°	68°	63°	Boom angle
Working Radius (m)	18.0	26.2																18.0
	20.0	25.9			21.2													20.0
	22.0	25.7			20.9				17.3				15.7					22.0
	24.0	25.4			20.6				17.0				15.4					24.0
	26.0	25.1	26.0		20.3				16.7				15.1					26.0
	28.0	24.8	25.7		20.0	20.5			16.4				14.8					28.0
	30.0	24.5	25.4		19.4	19.5			16.1	16.9			14.5	32.0 m/14.5				30.0
	34.0	22.5	22.7		17.4	17.7			14.5	15.2			13.1	13.7				34.0
	38.0	20.5	19.7		15.6	15.9			13.1	13.7			11.9	12.4				38.0
	42.0	18.0	17.3		13.9	14.3			12.0	12.4			10.9	11.3				42.0
	46.0	14.9	15.4		12.3	12.7			11.0	11.4			10.0	10.3				46.0
	50.0	48.0 m/13.0	13.8	10.6	10.7	11.3			10.1	10.4			9.2	9.5				50.0
	54.0		52.0 m/13.1	9.5	9.2	9.9	9.2		9.3	9.6			8.5	8.7				54.0
	58.0			8.5	7.6		8.5	8.2	7.3	8.7	8.0		6.3	8.1	7.8			58.0
	62.0			7.8	6.8		7.4	6.4	60.0 m/6.4	7.6	7.1		4.4	7.5	6.9			62.0
	66.0			7.1	6.1		6.7	5.8		64.0 m/7.0	6.4	5.4		5.7	6.2	68.0 m/4.9		66.0
	70.0				5.6		6.1	5.2			5.8	4.8			5.6	4.7		70.0
	74.0						72.0 m/5.8	4.6			5.2	4.3			5.0	4.2		74.0
	78.0							76.0 m/4.4			4.7	3.9			4.5	3.7		78.0
	82.0														80.0 m/4.2	3.3		82.0
	86.0															84.0 m/3.1		86.0
Reeves			2				2				2				2			Reeves

Note: Ratings according to EN13000.

Ratings shown in   are determined by the strength of the boom or other structural components.

Refer to notes P25 and P26.

Unit: metric ton

**Counterweight: 90.0 t,  
Carbody weight: 24.0 t**

57.9 m Boom Length	57.9																	Boom length (m)	
	21.3				27.4				33.5				39.6				Jib length (m)		
	Boom angle	88°	83°	68°	63°	88°	83°	68°	63°	88°	83°	68°	63°	88°	83°	68°	63°	Boom angle	
Working Radius (m)	12.0	40.5																12.0	
	14.0	38.4				39.5				37.2								14.0	
	16.0	35.4				35.7				35.5				27.0				16.0	
	18.0	33.0	40.5			32.4				32.3				27.0				18.0	
	20.0	30.0	37.3			29.6	36.3			29.6				27.0				20.0	
	22.0	27.5	33.7			27.2	33.0			27.2	32.8			27.0				22.0	
	24.0	25.2	30.7			25.1	30.2			25.1	30.1			25.0	27.0			24.0	
	26.0		28.0			23.3	27.7			23.3	27.6			23.2	27.0			26.0	
	28.0		25.7			21.6	25.5			21.7	25.5			21.6	25.3			28.0	
	30.0		23.6			20.1	23.6			20.2	23.6			20.1	23.5			30.0	
	34.0						20.4			17.7	20.5			17.7	20.4			34.0	
	38.0													15.6	17.9			38.0	
	42.0			15.8			36.0 m/19.0			36.0 m/16.5	17.9			15.6	17.9			42.0	
	46.0			13.8	44.0 m/11.8			13.6			15.7			13.8	15.8			46.0	
	50.0			44.0 m/13.0	11.2			12.0	48.0 m/10.2				11.7		14.0	48.0 m/10.7		46.0	
	54.0				48.0 m/10.5			10.8	9.7				10.4	52.0 m/8.8		48.0 m/13.2	10.1	50.0	
	58.0								8.7				9.4	8.3			9.1	56.0 m/7.4	54.0
	62.0												56.0 m/8.9	7.4			8.2	7.0	58.0
	66.0													60.0 m/7.0			7.4	6.3	62.0
	66.0																	5.7	66.0
Reeves				3				3					3			2			Reeves

57.9 m Boom Length	57.9																	Boom length (m)	
	45.7				51.8				57.9				61.0				Jib length (m)		
	Boom angle	88°	83°	68°	63°	88°	83°	68°	63°	88°	83°	68°	63°	88°	83°	68°	63°	Boom angle	
Working Radius (m)	18.0	24.5																18.0	
	20.0	24.2				20.0												20.0	
	22.0	23.9				19.7				16.4				14.9				22.0	
	24.0	23.6				19.4				16.2				14.7				24.0	
	26.0	23.1	24.3			19.1				16.0				14.5				26.0	
	28.0	21.5	24.0			18.8				15.8				14.3				28.0	
	30.0	20.0	22.8			18.5	19.3			15.6	32.0 m/16.0			14.1	32.0 m/14.4			30.0	
	34.0	17.6	19.8			17.2	17.4			14.4	15.1			13.0	13.7			34.0	
	38.0	15.6	17.5			15.4	15.7			13.1	13.6			11.8	12.3			38.0	
	42.0	13.8	15.5			13.8	14.1			11.9	12.4			10.8	11.2			42.0	
	46.0	12.4	13.9			12.2	12.6			10.9	11.3			9.9	10.2			46.0	
	50.0	48.0 m/11.7	12.4	52.0 m/9.3		10.6	11.1			10.0	10.3			9.1	9.4			50.0	
	54.0		52.0 m/11.8	8.8		9.2	9.8	56.0 m/7.9		7.9	9.5			7.0	8.6			54.0	
	58.0			7.9	60.0 m/6.5		8.5	7.5		6.0	8.5	60.0 m/6.8		5.0	8.0			58.0	
	62.0			7.1	6.1			6.7	64.0 m/5.2	60.0 m/5.1	7.5	6.4		3.3	6.8	6.2		62.0	
	66.0			6.4	5.5			6.0	4.9		64.0 m/6.4	5.7	68.0 m/4.3		4.7	5.5		66.0	
	70.0			68.0 m/6.1	5.0			5.4	4.4			5.1	4.0		68.0 m/3.7	4.9	3.9	70.0	
	74.0				72.0 m/4.7			4.9	3.9			4.6	3.6			4.4	3.4	74.0	
	78.0								3.5			4.1	3.2			3.9	3.0	78.0	
	82.0											80.0 m/3.9	2.8			3.5	2.6	82.0	
	86.0												84.0 m/2.6					86.0	
Reeves				2				2					2			2			Reeves

Note:  
Ratings according to EN13000.  
Ratings shown in   are determined by the strength of the boom or other structural components.  
Refer to notes P25 and P26.

# HYDRAULIC CRAWLER CRANE

# CKE2500

Unit: metric ton

**Counterweight: 90.0 t,  
Carbody weight: 24.0 t**

61.0 m Boom Length	Boom length (m)		61.0														Boom length (m)			
	Jib length (m)		30.5				33.5				39.6				45.7				Jib length (m)	
	Boom angle		88°	83°	68°	63°	88°	83°	68°	63°	88°	83°	68°	63°	88°	83°	68°	63°	Boom angle	
Working Radius (m)	14.0	35.0				27.0												14.0		
	16.0	31.6				27.0				27.0								16.0		
	18.0	28.7				27.0				27.0				23.6				18.0		
	20.0	26.2				26.1				26.0				23.3				20.0		
	22.0	24.1	29.4			24.0				23.8				23.0				22.0		
	24.0	22.2	26.9			22.1	25.8			22.0				21.8				24.0		
	26.0	20.6	24.6			20.5	23.8			20.4	23.6			20.2				26.0		
	28.0	19.1	22.7			19.0	22.0			18.9	21.8			18.8	21.6			28.0		
	30.0	17.8	21.0			17.7	20.4			17.6	20.2			17.5	20.1			30.0		
	34.0	15.5	18.1			15.5	17.7			15.4	17.6			15.3	17.5			34.0		
	38.0		15.7			36.0 m/14.5	15.5			13.6	15.4			13.5	15.3			38.0		
	42.0			44.0 m/12.2			13.7			12.0	13.6			12.0	13.5			42.0		
	46.0			11.5				11.2			12.1			10.7	12.1			46.0		
	50.0			10.2	52.0 m/8.5			10.0			48.0 m/11.4	9.7		48.0 m/10.1	10.8			50.0		
	54.0			9.2	8.0			9.0	7.9			8.7			9.6	8.3		54.0		
	58.0				7.1			8.1	7.1			7.8	6.7			7.4		58.0		
	62.0				60.0 m/6.8				6.4			7.0	6.0			6.7	5.6	62.0		
	66.0												5.4			6.0	5.0	66.0		
70.0													68.0 m/5.1		68.0 m/5.7	4.5	70.0			
74.0																4.1	74.0			
Reeves			3				2			2				2			Reeves			

61.0 m Boom Length	Boom length (m)		61.0											Boom length (m)		
	Jib length (m)		51.8				57.9				61.0				Jib length (m)	
	Boom angle		88°	83°	68°	63°	88°	83°	68°	63°	88°	83°	68°	63°	Boom angle	
Working Radius (m)	20.0	19.4													20.0	
	22.0	19.1				15.9				14.5					22.0	
	24.0	18.8				15.7				14.3					24.0	
	26.0	18.5				15.5				14.1					26.0	
	28.0	17.5				15.3				13.9					28.0	
	30.0	16.4	18.6			15.1	32.0 m/15.5			13.7	32.0 m/14.1				30.0	
	34.0	14.5	16.4			13.5	14.6			13.0	13.6				34.0	
	38.0	12.9	14.5			12.2	13.0			11.8	12.3				38.0	
	42.0	11.6	12.9			11.0	11.7			10.7	11.1				42.0	
	46.0	10.4	11.5			10.0	10.7			9.8	10.2				46.0	
	50.0	9.5	10.3			9.0	9.7			8.4	9.3				50.0	
	54.0	8.6	9.3	56.0 m/7.5		7.1	8.9			6.3	8.6				54.0	
	58.0		8.4	7.1		5.3	8.2	60.0 m/6.3		4.4	7.9				58.0	
	62.0		60.0 m/7.7	6.3		60.0 m/4.4	6.5	6.0		2.8	6.2	5.8			62.0	
	66.0			5.6	4.4		4.8	5.3			4.2	5.1			66.0	
70.0			5.0	3.9			4.7	3.6		68.0 m/3.2	4.6	72.0 m/3.2		70.0		
74.0			4.5	3.5			4.2	3.2			4.0	3.0		74.0		
78.0				3.1			3.8	2.8			3.6	76.0 m/2.8		78.0		
82.0				80.0 m/2.9			80.0 m/3.6				3.2			82.0		
Reeves			2			2			2					Reeves		

Note:  
 Ratings according to EN13000.  
 Ratings shown in   are determined by the strength of the boom or other structural components.  
 Refer to notes P25 and P26.



# Luffing Boom Lifting Capacities with Luffing Jib Attached at 23 Degree Boom to Luffing Jib Offset Angle

Unit: metric ton

Counterweight: 90.0 t,  
Carbody weight: 24.0 t

21.3 m Boom Length	Boom length (m)	21.3					
	Jib length (m)	21.3	30.5	39.6	48.8	57.9	61.0
	6.4 m	125.0	119.0	114.1	107.5	100.3	97.2
	7.0 m	125.0	119.0	114.1	107.5	100.3	97.2
	8.0 m	125.0	119.0	114.1	107.5	100.3	97.2
	9.0 m	111.7	106.6	102.7	97.3	91.6	89.1
	10.0 m	99.3	94.5	90.7	85.7	80.3	77.9
	12.0 m	72.6	68.2	64.8	61.2	55.2	53.0
	14.0 m	55.3	51.3	48.0	44.7	39.1	37.2
	16.0 m	43.9	40.1	37.0	33.8	28.6	26.8
	18.0 m	35.7	32.2	29.1	26.1	21.2	19.5
	Reeves	10	10	10	8	8	8

30.5 m Boom Length	Boom length (m)	30.5					
	Jib length (m)	21.3	30.5	39.6	48.8	57.9	61.0
	8.0 m	115.2	111.6	106.5	101.4	95.8	93.4
	9.0 m	107.3	103.9	99.3	94.5	89.3	87.1
	10.0 m	95.7	92.5	88.1	83.7	78.8	76.7
	12.0 m	72.9	70.0	66.0	62.0	57.6	55.7
	14.0 m	55.6	53.0	49.3	45.5	41.5	39.7
	16.0 m	44.0	41.6	38.1	34.5	30.7	29.1
	18.0 m	35.7	33.4	30.1	27.5	23.1	21.6
	20.0 m	29.3	27.1	23.9	21.4	17.2	15.8
	22.0 m	24.2	22.2	19.0	16.7	12.6	11.2
	24.0 m	20.2	18.2	15.1	12.9	9.0	7.7
	Reeves	10	10	8	8	8	7

36.6 m Boom Length	Boom length (m)	36.6					
	Jib length (m)	21.3	30.5	39.6	48.8	57.9	61.0
	10.0 m	93.5	89.2	84.6	80.3	75.8	73.8
	12.0 m	74.5	70.6	66.4	62.6	58.5	56.7
	14.0 m	57.1	53.5	49.7	46.2	42.3	40.7
	16.0 m	45.5	42.1	38.5	35.1	31.6	30.0
	18.0 m	37.1	33.9	30.4	27.3	23.9	22.4
	20.0 m	30.6	27.5	24.2	21.2	18.0	16.6
	22.0 m	25.5	22.5	19.3	16.4	13.3	12.0
	24.0 m	21.3	18.4	15.3	12.6	9.6	8.3
	26.0 m	18.0	15.2	12.2	9.5	6.6	
	28.0 m	15.1	12.4	9.5	7.5		
	30.0 m	12.9	10.2	7.4	5.5		
	Reeves	7	7	7	6	6	6

42.7 m Boom Length	Boom length (m)	42.7					
	Jib length (m)	21.3	30.5	39.6	48.8	57.9	61.0
	12.0 m	71.6	67.5	63.5	59.9	55.9	54.2
	14.0 m	57.3	53.5	49.8	46.5	42.9	41.3
	16.0 m	45.7	42.1	38.6	35.5	32.1	30.6
	18.0 m	37.2	33.8	30.6	27.6	24.4	23.0
	20.0 m	30.6	27.4	24.2	21.4	18.3	17.0
	22.0 m	25.3	22.2	19.2	16.5	13.6	12.3
	24.0 m	21.2	18.2	15.2	12.6	9.8	8.6
	26.0 m	17.8	14.9	12.0	9.5	6.8	
	28.0 m	14.9	12.1	9.3	6.9		
	30.0 m	12.5	9.8	7.1	5.2		
	32.0 m	10.5	7.8	5.2			
	34.0 m	8.7	6.1				
	Reeves	6	6	5	5	5	5

48.8 m Boom Length	Boom length (m)	48.8					
	Jib length (m)	21.3	30.5	39.6	48.8	57.9	61.0
	12.0 m	65.4	61.7	57.8	54.0	49.3	47.3
	14.0 m	55.8	52.5	48.5	46.2	41.8	40.3
	16.0 m	45.5	42.4	38.7	36.6	32.4	31.0
	18.0 m	37.1	34.2	30.6	28.6	24.7	23.4
	20.0 m	30.4	27.7	24.3	22.4	18.7	17.4
	22.0 m	25.2	22.5	19.3	17.4	13.9	12.6
	24.0 m	21.0	18.4	15.3	13.5	10.1	8.9
	26.0 m	17.6	15.1	12.1	10.3	7.0	
	28.0 m	14.7	12.2	9.3	7.6		
	30.0 m	12.3	9.9	7.0	5.4		
	32.0 m	10.2	7.8	5.1			
	34.0 m	8.4	6.1				
	36.0 m	6.9					
	38.0 m	5.5					
	Reeves	5	5	5	5	4	4

54.9 m Boom Length	Boom length (m)	54.9					
	Jib length (m)	21.3	30.5	39.6	48.8	57.9	61.0
	14.0 m	51.2	47.7	44.6	41.6	37.3	35.8
	16.0 m	44.4	41.1	38.3	35.4	31.4	30.0
	18.0 m	37.1	34.0	31.3	28.6	24.8	23.5
	20.0 m	30.4	27.4	24.9	22.3	18.7	17.5
	22.0 m	25.2	22.3	19.8	17.4	13.9	12.7
	24.0 m	21.0	18.2	15.8	13.4	10.1	9.0
	26.0 m	17.5	14.7	12.5	10.2	7.0	5.9
	28.0 m	14.6	12.0	9.8	7.5		
	30.0 m	12.1	9.5	7.4	5.2		
	32.0 m	10.0	7.5	5.4			
	34.0 m	8.2	5.7				
	36.0 m	6.6					
	38.0 m	5.2					
	Reeves	4	4	4	4	3	3

61.0 m Boom Length	Boom length (m)	61.0				
	Jib length (m)	30.5	39.6	48.8	57.9	61.0
	14.0 m	46.2	43.6	40.0	35.8	34.3
	16.0 m	38.4	35.6	32.8	28.9	27.6
	18.0 m	32.6	30.0	27.4	23.7	22.4
	20.0 m	27.2	24.7	22.2	18.7	17.5
	22.0 m	22.1	19.7	17.4	14.0	12.9
	24.0 m	17.9	15.6	13.3	10.1	9.0
	26.0 m	14.6	12.3	10.2	7.0	6.0
	28.0 m	11.7	9.6	7.4		
	30.0 m	9.3	7.2	5.1		
	32.0 m	7.3	5.2			
	34.0 m	5.5				
	Reeves	4	4	3	3	3

Note: Ratings according to EN13000.

Ratings shown in   are determined by the strength of the boom or other structural components.

Refer to notes P25 and P26.